



 **Ceco Door**

ASSA ABLOY

Architectural Guide

Doors & Frames

Contents

LEED Credits	1-2
Product Selection Guide	3-5

Doors

Regent™/Omega™ Doors	6-7
Legion/UltraDor Doors	8-9
Imperial™/Versadoor™ Doors	10-11
Medallion™ Doors	12-13
Medallion™ 450° Temperature Rise-Rated Doors	14-15
Fuego™ 250° Temperature Rise-Rated Doors	16-17
Sound-Tech™ Doors	18-19
Madera™ Doors	20-21
StormPro™ Severe Weather (Tornado) Door System	22-23
Medallion Maxim™ System	24-25
Imperial Maxim™ System	26-27
ThruLite™ Doors	28
Marine-Tech™ System	29
Stainless-Tech™ System	30-31
ArmorShield™ System	32-33
RestrictDor™	34-35
ElectroLynx® Factory Pre-Wiring	36

Innovative Products

ReadySet®	37
Security SideLite	38
Privacy SideLite	39
Sight Light	40

Frames

Standard Frames	41
Drywall Frames	42
Made-To-Order Frames	43
Fabricated Frames/Arched-Tech™ Frames	44
Smoke-Tech™ Frames/Weatherstripped Frames	45
Thermal Break Frames	45

Reference

Colorstyle Factory Prefinishing	46
Product Conformance	47
Performance Data	48
Windstorm (Hurricane) Products	49
Standard Available Door Sizes and Relative Pricing	50
Door Designs	51
Fire Door Labeling	52
Fire Doors with Vision Panel Trim	53
Fire Doors with Single Point Latching	54
Fire Doors with Fire Exit Hardware	55-56

Ceco Door is the world's leading manufacturer of steel doors and frames for commercial, industrial, and institutional construction.

Ceco Doors' Mission:

“To be the leading producer and marketer of commercial door products for building construction worldwide, sustaining a competitive advantage through service, product and process superiority, a total quality commitment, and a strong customer focus.”

Our mission statement reflects our long-term commitment to the construction industry's Owners, Developers, Architects, Contractors, and our Distributor partners.

Ceco's annual capital investment commitment means products that are manufactured utilizing modern computerized processing and manufacturing technology and advanced digital equipment.

Our coast to coast network of strategically located Service Centers is designed to bring steel doors and frames closer to the market. These modern, fully equipped facilities, connected electronically via our wide area computer network (WAN), offer the largest and most responsive delivery system in the industry. All facilities are licensed by Underwriters Laboratories (UL) and Warnock Hersey (WH) for the conversion and labeling of fire doors, frames and windows.

Marketing Philosophy: Ceco Door markets its products to the construction industry exclusively through qualified, reputable, blueprint distribution. More than 500 authorized distributors in 15 countries worldwide, equipped with local inventories and conversion facilities, are capable of furnishing complete bid packages including commercial and architectural grade wood doors, and commercial grade architectural hardware. This marketing strength provides you with unequalled service and delivery coordination.



ASSA ABLOY, the global leader
in door opening solutions

Eco-Friendly

Recycled Steel Doors and Frames

Even Old Cars Get a New Lease on Life!



Ceco Opens the Door to a Cleaner Environment

Ceco steel doors and frames are made from recycled steel, much of which comes from old cars. We give scrap metal new life as high quality doors and frames. In fact, we can produce 20 doors with the steel scrapped from one car!

Not only does recycling steel clean up the environment, it helps keep our natural resources from being quickly depleted.

Examples of the Ceco commitment to sustainable building construction and improving energy efficiency include:

Total Recycled Content

- Steel doors and frames: up to 63.5%
- Packaging material: 100%

Note: See details on next page for applicable LEED credits

Energy Efficiency

- In one year, Ceco recycled steel usage conserves 226 billion BTUs and the energy to power 7,500 homes
- Ceco thermal break frames incorporate insulating material for maximum heat retention in cold conditions



 **Ceco Door**
ASSA ABLOY

ASSA ABLOY, the global leader
in door opening solutions



Ceco uses environmentally-sound practices in the manufacturing and shipping of our hollow metal doors and frames. Let us help as you strive to design "Green" buildings that are safe, secure and aesthetically-pleasing.

Learn more at www.cecodoor.com.

Eco-Friendly

Recycled Steel Doors and Frames

U.S. Green Building Council (USGBC) LEED Rating Statement

“The Leadership in Energy and Environmental Design (LEED) Green Building Rating System™ is the nationally accepted benchmark for the design, construction, and operation of high performance green buildings. LEED

promotes a whole-building approach to sustainability by recognizing performance in five key areas of human and environmental health: sustainable site development, water savings, energy efficiency, materials selection, and

indoor environmental quality.” Based on review of current LEED rating systems for applicability to architectural hollow metal doors and frames, Ceco Door states the following.

Applicable LEED Programs and Credits

Materials and Resources: Recycled Content

Program	Checklist	Credit	Requirement
LEED-NC LEED-CS LEED-S LEED-CI	Materials and Resources	Recycled Content MR 4.1	Use materials with recycled content such that the sum of the post-consumer recycled content plus one-half of the pre-consumer content constitutes at least 10% of the total values of the material in the project
LEED-NC LEED-CS LEED-S LEED-CI	Materials and Resources	Recycled Content MR 4.2	Use materials with recycled content such that the sum of the post-consumer recycled content plus one-half of the pre-consumer content constitutes an additional 10% beyond MR Credit 4.1 (total of 20% based on cost) of the total values of the material in the project

Ceco Door Cold Rolled Product	Post-consumer Recycled Content *	Pre-consumer Recycled Content *	Total LEED Recycled Content Percentage
Frames	59	9	63.5
Medallion, Armorshield, Fuego, ThruLite, RestrictDor Doors	59	9	63.5
Regent/Omega, Legion/UltraDor, Imperial/Versadoor Doors	57.2	8.7	61.5

Ceco Door Galvannealed Product	Post-consumer Recycled Content *	Pre-consumer Recycled Content *	Total LEED Recycled Content Percentage
Frames	23.6	6.6	26.9
Medallion, Armorshield, Fuego, ThruLite, RestrictDor Doors	23.6	6.6	26.9
Regent/Omega, Legion/UltraDor, Imperial/Versadoor Doors	22.9	6.4	26.1

*Recycled content defined in accordance with industry standards

Post-consumer material is defined as waste material generated by households or by commercial, industrial and institutional facilities in their role as end-users of the product, which can no longer be used for its intended purpose.

Post-industrial (pre-consumer) recycled content refers to scraps that are left over during industrial or manufacturing processes, which are subsequently recycled and reused.

Materials and Resources: Regional Materials

Program	Checklist	Credit	Requirement
LEED-CI	Materials and Resources	Regional Materials MR 5.1	Use a minimum of 20% of the combined value of construction and Division 12 (Furniture) materials and products that are manufactured* regionally within a radius of 500 miles. <i>*Manufactured refers to the final assembly of components</i>

All Ceco Door products are manufactured in Milan, TN with the exception of the following:

Ceco Door Product - Medallion, ThruLite, Armorshield, Fuego, RestrictDor Doors Manufacturing/Final Assembly Location – Mexico

Indoor Environmental Quality: Low Emitting Materials

Ceco Door Products	Volatile Organic Compounds
All	No measurable latent VOC emissions exist in product at the time of installation.



ASSA ABLOY, the global leader in door opening solutions

Product Selection Guide

CHOOSING THE CORRECT DOOR

Door selection is based on FREQUENCY OF USE and IMPACT PROBABILITY. High traffic areas and openings subject to abuse require doors of heavy-duty construction. Openings in the category of MODERATE to LOW frequency and impact do not generally require heavy-duty doors.

FREQUENCY OF USE is classified as HIGH, MODERATE or LOW depending on the location in the building and the number of times per day the door will be used. Most building entrances are HIGH frequency openings, as are toilet rooms in schools and office buildings. MODERATE frequency doors are those

found in apartment entrance units and school classrooms. Doors that normally remain in the open or closed position are considered LOW frequency. On a normal project, the majority of doors are of MODERATE to LOW frequency use, and doors designed for these applications should be used. Using doors of heavy-duty construction in all openings results in unnecessary cost; however, selecting doors based primarily on their low initial cost may result in abnormal maintenance and replacements.

IMPACT PROBABILITY is also classified as HIGH, MODERATE or LOW. Doors

subject to high impact are usually the same doors that receive high frequency use. However, some doors, such as rear delivery entrances and service doors, may be subject to HIGH impact even though they are of MODERATE to LOW frequency. MODERATE impact openings are found in nursing homes, hospital patient rooms or school classrooms. LOW impact doors are those in closets, private offices, hotel communicating doors and other such openings.

DOOR LEVEL refers to ANSI/SDI A250.8 recommendation criteria.

MODEL	TYPE	GAUGE	DEC	MM
LEVEL 1 - LIGHT COMMERCIAL				
1	Flush	20	0.032	0.8
2	Seamless	20	0.032	0.8
LEVEL 2 - HEAVY-DUTY COMMERCIAL				
1	Flush	18	0.042	1.0
2	Seamless	18	0.042	1.0
LEVEL 3 - EXTRA HEAVY-DUTY COMMERCIAL				
1	Flush	16	0.053	1.3
2	Seamless	16	0.053	1.3
3	Stile & Rail	16	0.053	1.3
LEVEL 4 - MAXIMUM DUTY COMMERCIAL				
1	Flush	14	0.067	1.7
2	Seamless	14	0.067	1.7
2	Seamless	12	0.093	2.3
COMMERCIAL SECURITY PRODUCTS				
2	Seamless	14	0.067	1.7
2	Seamless	12	0.093	2.3



ASSA ABLOY

ASSA ABLOY, the global leader
in door opening solutions

Product Selection Guide

BUILDING TYPE AND OPENING LOCATION	FREQUENCY OF USE	IMPACT PROBABILITY	DOOR LEVEL				DOOR THICKNESS	SPECIAL CONDITIONS
			1	2	3	4		
OFFICES - PROFESSIONAL BUILDINGS								
Entrance	High	High			■	■	1-3/4"	Two-way vision
Individual Office	Low	Low	■				1-3/4"	Privacy & acoustics
Toilet Rooms	High	High		■			1-3/4"	
Stairwells	Moderate	Moderate		■	■		1-3/4"	Two-way vision & fire label
Equipment Rooms	Moderate	Moderate		■	■	■	1-3/4"	
Boiler Room	Moderate	Moderate		■	■	■	1-3/4"	Fire label
Storm Shelters	Low	Low			■	■	1-3/4"	Impact threat (Tornados)
SCHOOLS - UNIVERSITIES - LIBRARIES								
Entrance and Exits	High	High			■	■	1-3/4"	Two-way vision
Classrooms	Moderate	Moderate		■			1-3/4"	Two-way vision & acoustics
Toilet Rooms	High	High		■	■	■	1-3/4"	
Gymnasiums	Moderate	High		■	■	■	1-3/4"	Impact & two-way vision
Cafeteria	Moderate	Moderate to High		■	■	■	1-3/4"	Two-way vision
Stairwells	High	High		■	■	■	1-3/4"	Two-way vision & fire label
Storm Shelters	Low	High			■	■	1-3/4"	Impact threat (Tornados)
Safe Rooms	Low	High				■	1-3/4" / 2"	Aggression
HOSPITALS - NURSING HOMES - CONVALESCENT HOMES								
Entrance	High	High			■	■	1-3/4"	Two-way vision
Patient Rooms	Moderate	Moderate		■			1-3/4"	Privacy & acoustics
Stairwells	Moderate	Moderate		■	■		1-3/4"	Two-way vision & fire label
Operating Rooms	High	High		■	■		1-3/4"	Sanitation
Examination Rooms	High	High			■	■	1-3/4"	Sanitation
Recreation Rooms	Moderate	Moderate		■			1-3/4"	Acoustics
Kitchen	Moderate	Moderate		■	■	■	1-3/4"	Two-way vision
Cafeteria	High	High			■	■	1-3/4"	Two-way vision
Storm Shelters	Low	Low			■	■	1-3/4"	Impact threat (Tornados)
APARTMENTS - DORMITORIES - CONDOMINIUMS								
Building Entrance	High	High			■	■	1-3/4"	Two-way vision
Room Entrance	Moderate	Moderate	■	■			1-3/4"	Privacy & acoustics
Bedrooms	Low	Low	■				1-3/4"	
Bathrooms	Low	Low	■				1-3/4"	
Closets	Low	Low	■				1-3/4"	
Stairwells	Moderate	High		■			1-3/4"	Two way vision & fire label
Storm Shelters	Low	High			■	■	1-3/4"	Impact threat (Tornados)
HOTELS - MOTELS - TOURIST CABINS								
Building Entrance	High	Moderate	■	■			1-3/4"	Two-way vision
Room Entrance	Moderate	Moderate	■				1-3/4"	Privacy, acoustics, insulation
Bathrooms	Low	Low	■				1-3/4"	
Closets	Low	Moderate	■				1-3/4"	
Stairwells	Moderate	High		■			1-3/4"	Two-way vision & fire label
Storage & Utility	Moderate	High		■	■		1-3/4"	
Offices	Low	Low	■				1-3/4"	Privacy
COMMUNITY SHELTERS - TORNADO SHELTERS								
Entrance & Exits	High	High			■	■	1-3/4"	Impact threat (Tornados)
Toilet Rooms	High	High		■	■	■	1-3/4"	
Storage & Utility	Moderate	High		■	■		1-3/4"	

Regent™/Omega™

Honeycomb Core

Features

- 1-3/4" (44.4mm) general purpose full flush design, rated for light to extra heavy-duty use
- Kraft Honeycomb core provides structural strength and exceptional flatness
- Full-coat internal contact adhesive for permanent pressure bond and rust prevention
- Mechanically interlocked, hemmed vertical edge seams (as shown) or center edge seam for added strength and rigidity
- Inverted end channels welded to both face sheets
- 7 gauge (4.2mm) steel hinge reinforcement
- Rust inhibitive prime paint base coat meets ANSI A250.10

Available Options

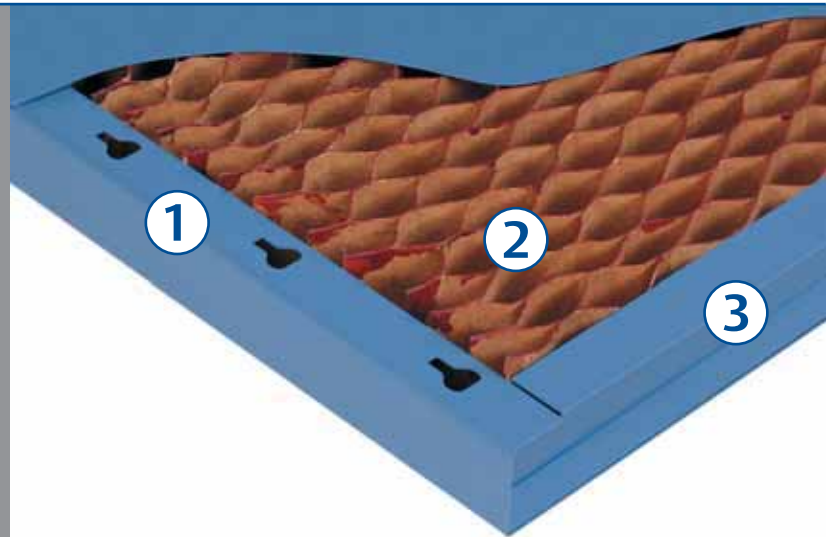
- 14 gauge (1.7mm) closer reinforcement
- Galvannealed, galvanized, or textured pattern steel
- Steel end channel filler cap
- Seamless Design by application of epoxy filler or continuous welding
- Applied or flush-welded steel glass kits
- Embossed 6 panel designs
- Factory installed, insulated glazing
- Colorstyle factory finish (see page 46)
- ElectroLynx® pre-wired quick connect cable (see page 36)

Regent™

- Handed as specified
- Lock edge beveled 1/8" in 2" (1:16)
- For any standard commercial template hardware

Omega™

- Non-handed
- Square lock edge
- For any standard commercial template hardware



1. Mechanically interlocked, hemmed vertical edge seam for added strength and rigidity.
2. Honeycomb core provides structural strength.
3. Inverted end channels welded to both face sheets.

DOOR LEVEL AVAILABILITY				
MODEL	TYPE	Gauge	DEC	MM
LEVEL 1 LIGHT COMMERCIAL				
1	Flush	20	0.032	0.8
2	Seamless	20	0.032	0.8
LEVEL 2 HEAVY-DUTY COMMERCIAL				
1	Flush	18	0.042	1.0
2	Seamless	18	0.042	1.0
LEVEL 3 EXTRA HEAVY-DUTY COMMERCIAL				
1	Flush	16	0.053	1.3
2	Seamless	16	0.053	1.3

Performance

- Core Material: Honeycomb
- Sound Transmission: STC 32 (18 gauge operable)
- Designs Available: see page 51 for designs



Physical Endurance (Cycle Testing)

20 gauge	Level C	250,000 cycles
18 gauge	Level B	1,000,000 cycles
16 gauge	Level A	1,000,000 cycles

Fire Label (Rating): see page 43 for additional information on fire doors

T	20 minute
C	3/4 hour
O	1 hour
B	1-1/2 hour
A	3 hour

Maximum Size

Single	40 x 90 (1219mm x 2743mm)
Pair	80 x 90 (2438mm x 2743mm)

Legion™ / Ultrador™

Polystyrene Core

Features

- 1-3/4" (44.4 mm) insulated full flush design - rated for light to extra-heavy-duty use
- Polystyrene core provides insulation characteristics and resistance to impact
- Core is chemically bonded to face sheets providing total surface support
- Mechanically interlocked, hemmed vertical edge seams (as shown) or center edge seam for added strength and rigidity.
- 7 gauge (4.2 mm) steel hinge reinforcement
- Inverted end channels welded to both face sheets
- Rust inhibitive prime paint base coat meets ANSI A250.10

Available Options

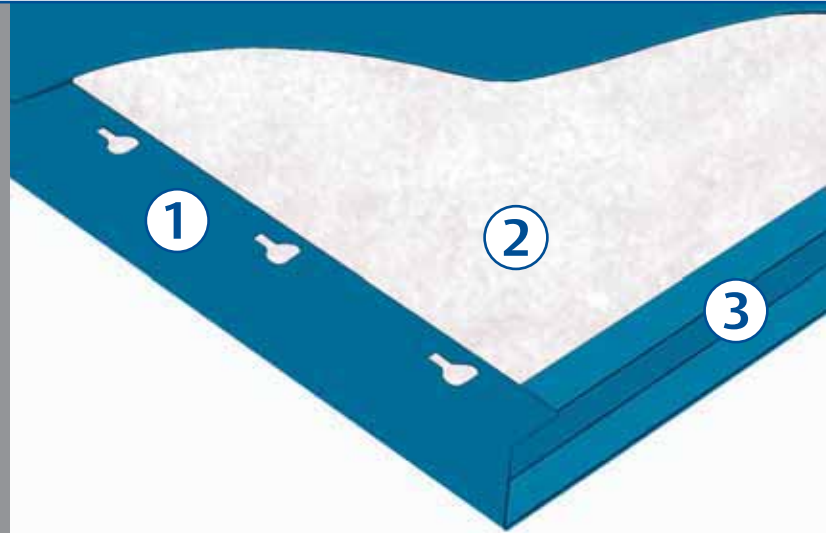
- 14 gauge (1.7mm) closer reinforcement
- Galvannealed, galvanized, or textured pattern steel
- Steel end channel filler cap
- Seamless design by application of epoxy filler or continuous welding
- Applied or flush-welded steel glass kits
- Factory installed insulated glazing
- Colorstyle factory finish (see page 46)
- ElectroLynx® pre-wired quick connect cable (see page 36)

Legion™

- Handed as specified
- Lock edge beveled 1/8" in 2" (1:16)
- For any standard commercial template hardware

UltraDor™

- Non-handed
- Square lock edge
- For any standard commercial template hardware



1. Mechanically interlocked, hemmed vertical edge seam for strength and rigidity.
2. Polystyrene core provides insulation characteristics and resistance to impact.
3. Core is chemically bonded providing total surface support.

DOOR LEVEL AVAILABILITY				
MODEL	TYPE	GAUGE	DEC	MM
LEVEL 1 LIGHT COMMERCIAL				
1	Flush	20	0.032	0.8
2	Seamless	20	0.032	0.8
LEVEL 2 HEAVY-DUTY COMMERCIAL				
1	Flush	18	0.042	1.0
2	Seamless	18	0.042	1.0
LEVEL 3 EXTRA HEAVY-DUTY COMMERCIAL				
1	Flush	16	0.053	1.3
2	Seamless	16	0.053	1.3
LEVEL 4 MAXIM DUTY COMMERCIAL				
1	Flush	1.4	0.067	1.7
2	Seamless	1.4	0.067	1.7

Performance

- Core Material: Polystyrene
- Thermal Characteristics: R Factor 6.35 (ASTM C518)
- Sound Transmission: STC 23 (18 gauge operable)
- Physical Endurance (Cycle Testing)



Physical Endurance (Cycle Testing)

20 gauge	Level C	250,000 cycles
18 gauge	Level B	500,000 cycles
16 gauge	Level A	1,000,000 cycles
14 gauge	Level A	1,000,000 cycles

Fire Label (Rating): see page 43 for additional information on fire doors

T	20 minute
C	3/4 hour
O	1 hour
B	1-1/2 hour
A	3 hour

Maximum Size

Single	40 x 100 (1219mm x 3048mm)
Pair	80 x 100 (1219mm x 3048mm)

Imperial™/Versadoor™

Polyurethane Core

Features

- 1-3/4" (44.4 mm) insulated full flush design - rated for light to maximum-duty use
- Foamed-in-place polyurethane core provides total surface support, impact resistance and exceptional thermal resistance
- Mechanically interlocked, hemmed vertical edge seams for added strength and rigidity
- Inverted end channels welded to both face sheets
- 7 gauge (4.2 mm) steel hinge reinforcement
- Electrostatically applied prime base coat

Available Options

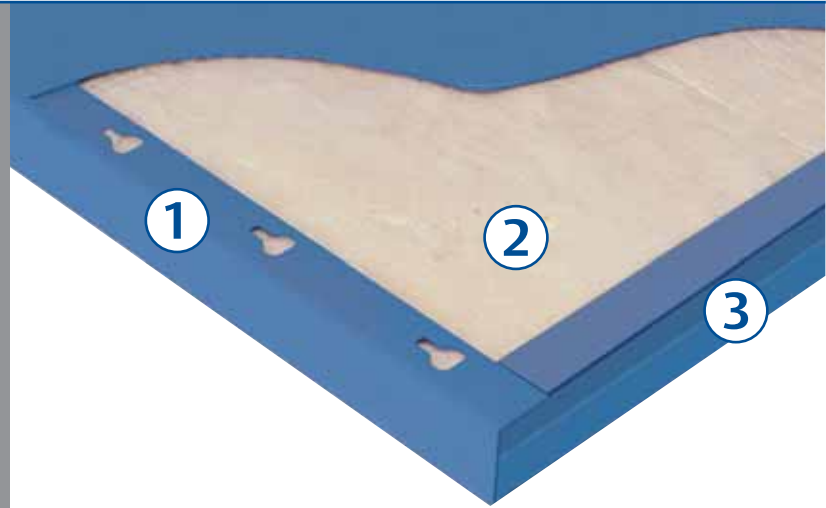
- 14 gauge (1.7mm) closer reinforcement
- Seamless design by application of epoxy filler or continuous welding
- Galvannealed, galvanized, or textured pattern steel
- Steel end channel filler cap
- Applied steel glass kits
- Embossed 6 panel, 8 panel, crossbuck and 2 panel designs
- Factory installed, insulated glazing
- Colorstyle factory finish (see page 46)
- Electrolynx® pre-wired quick connect cable (see page 36)

Imperial™

- Handed as specified
- Lock edge beveled 1/8" in 2" (1:16)
- For any standard commercial template hardware

VersaDoor™

- Non-handed
- Square lock edge
- For any standard commercial template hardware



1. Mechanically interlocked, hemmed vertical edge seam for strength and rigidity.
2. Foamed in-place polyurethane core provides total surface support, impact resistance and exceptional thermal resistance.
3. Inverted end channels welded to both face sheets for added strength.

Imperial™/Versadoor™

Polyurethane Core

DOOR LEVEL AVAILABILITY				
MODEL	TYPE	GAUGE	DEC	MM
LEVEL 1 LIGHT COMMERCIAL				
1	Flush	20	0.032	0.8
2	Seamless	20	0.032	0.8
LEVEL 2 HEAVY-DUTY COMMERCIAL				
1	Flush	18	0.042	1.0
2	Seamless	18	0.042	1.0
LEVEL 3 EXTRA HEAVY-DUTY COMMERCIAL				
1	Flush	16	0.053	1.3
2	Seamless	16	0.053	1.3
LEVEL 3 EXTRA HEAVY-DUTY COMMERCIAL				
2	Seamless	14	0.067	1.7

Performance

- Core Material: Foamed-in-Place Polyurethane
- U Factor 0.067, R Factor 11.01 (ASTM C518)
- Sound Transmission: STC 26 (18 gauge operable)
- Designs Available: see page 51 for designs



Physical Endurance (Cycle Testing)

20 gauge	Level C	250,000 cycles
18 gauge	Level B	1,000,000 cycles
16 gauge	Level A	1,000,000 cycles
14 gauge	Level A	1,000,000 cycles

Fire Label (Rating): see page 43 for additional information on fire doors

Note: Imperial and Versadoor are labeled in compliance with UL10C, Positive Pressure Fire Tests of Door Assemblies

T	20 minute
C	3/4 hour
O	1 hour
B	1-1/2 hour
A	3 hour

Maximum Size

Single	40 x 90 (1219mm x 2743mm)
Pair	80 x 90 (2438mm x 2743mm)

 **Ceco Door**
ASSA ABLOY

ASSA ABLOY, the global leader
in door opening solutions

Medallion™

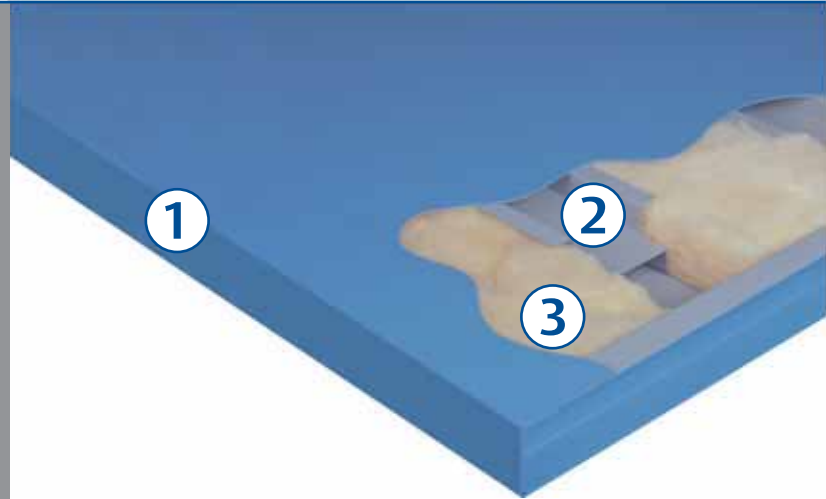
Steel Stiffened Core

Features

- 1-3/4" (44.4mm) custom construction seam/seamless design - rated for heavy duty to maximum-duty use
- 22 gauge vertical steel stiffeners spaced 6" apart, welded to face sheets every 5"
- Fiberglass insulation to limit thermal and sound transmission
- Lock edge beveled 1/8" in 2" (1:16)
- Inverted end channels welded to both face sheets
- 7 gauge (4.2 mm) steel hinge reinforcement
- Rust inhibitive prime paint base coat meets ANSI A250.10

Available Options

- 20 gauge (.08mm) or 18 gauge (1.0mm) vertical steel stiffeners
- 14 gauge (1.7mm) or 12 gauge (2.3mm) closer reinforcement
- Galvannealed or galvanized steel
- Steel end channel filler cap
- Applied or flush-welded steel glass kits
- Colorstyle factory finish (see page 46)
- ElectroLynx® prewired quick connect cable (see page 36)
- Fully welded edge seams enhance strength and appearance



1. Custom construction seam/seamless design-rated for heavy duty to maximum-duty use.
2. Standard 22 gauge vertical steel stiffeners for added strength.
3. Fiberglass insulation for thermal and sound transmission reduction.

DOOR LEVEL AVAILABILITY				
MODEL	TYPE	GAUGE	DEC	MM
LEVEL 2 HEAVY-DUTY COMMERCIAL				
1	Flush	18	0.042	1.0
2	Seamless	18	0.042	1.0
LEVEL 3 EXTRA HEAVY-DUTY COMMERCIAL				
1	Flush	16	0.053	1.3
2	Seamless	16	0.053	1.3
LEVEL 3 EXTRA HEAVY-DUTY COMMERCIAL				
1	Flush	14	0.0567	1.7
2	Seamless	14	0.067	1.7
1	Flush	12	0.093	2.3
2	Seamless	12	0.093	2.3

Performance

- Designs Available: see page 51 for designs
- Sound Transmission STC 38 (18 gauge operable)



Physical Endurance (Cycle Testing)

18 gauge	Level B	500,000 cycles
16 gauge	Level A	4,000,000 cycles
14 gauge	Level A	1,000,000 cycles

Fire Label (Rating): see page 43 for additional information on fire doors

T	20 minute
C	3/4 hour
O	1 hour
B	1-1/2 hour
A	3 hour

Maximum Size

Single	50 x 120 (1524mm x 3657mm)
Pair	100 x 120 (3084mm x 3657mm)

Medallion™ 450°

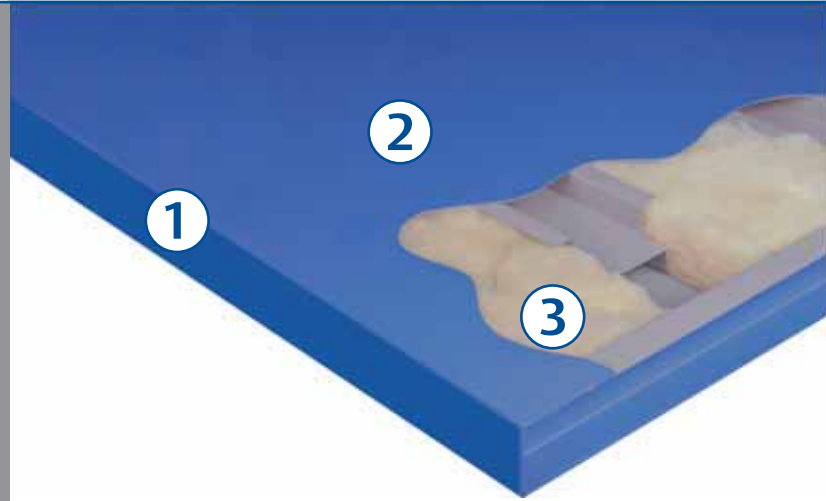
Temperature Rise-Rated Fire Door

Features

- 1-3/4" (44.4mm) custom construction seam/seamless design - rated for heavy duty to maximum-duty use
- Designed for building code requirements for temperature rise rated fire doors to 450° (232°C) maximum.
- 22 gauge vertical steel stiffeners spaced 6" apart, welded to face sheets every 5"
- Inorganic thermal barrier between stiffeners
- Rock wool insulation to limit thermal and sound transmission
- Inverted end channels welded to both face sheets
- 7 gauge (4.2mm) steel hinge reinforcement
- Rust inhibitive prime paint base coat meets ANSI A250.10

Available Options

- 20 gauge (.08mm) or 18 gauge (1.0mm) vertical steel stiffeners
- 14 gauge (1.7mm) or 12 gauge (2.3mm) closer reinforcement
- Galvanized or galvanized steel
- ElectroLynx® pre-wired quick connect cable (see page 36)
- Steel end channel filler cap
- Applied or flush-welded steel glass kits
- Colorstyle factory finish (see page 46)
- Fully welded edge seams enhance strength and appearance



1. Custom seam/seamless design rated for heavy-duty to maximum-duty use.
2. Designed for building code requirements for temperature rise rated fire doors to 450° maximum.
3. Rock wool insulation to limit thermal and sound transmission.

Medallion 450°

Temperature Rise-Rated Fire Door

DOOR LEVEL AVAILABILITY				
MODEL	TYPE	GAUGE	DEC	MM
LEVEL 2 HEAVY-DUTY COMMERCIAL				
1	Flush	18	0.042	1.0
2	Seamless	18	0.042	1.0
LEVEL 3 EXTRA HEAVY-DUTY COMMERCIAL				
1	Flush	16	0.053	1.3
2	Seamless	16	0.053	1.3
LEVEL 3 EXTRA HEAVY-DUTY COMMERCIAL				
1	Flush	14	0.0567	1.7
2	Seamless	14	0.067	1.7
1	Flush	12	0.093	2.3
2	Seamless	12	0.093	2.3

Performance

- Core Material: Steel Stiffeners/Rock Wool
- Sound Transmission: STC 41 (18 gauge operable)

Physical Endurance (Cycle Testing)

18 gauge	Level B	500,000 cycles
16 gauge	Level A	4,000,000 cycles

Fire Label (Rating): see page 43 for additional information on fire doors

T	20 minute
C	3/4 hour
O	1 hour
B	1-1/2 hour
A	3 hour

Maximum Size

Single	50 x 120 (1524mm x 3657mm)
Pair	100 x 120 (3084mm x 3657mm)



Fuego™ / 250°

Temperature Rise-Rated Core Fire Door

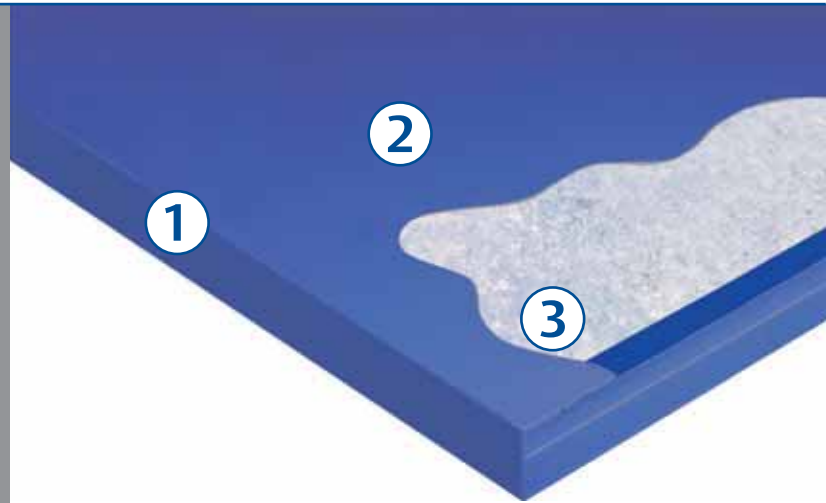
Features

- 1-3/4" (44.4mm) full flush temperature rise fire door rated for light to extra-heavy duty use
- Fuego satisfies local building code requirements for temperature rise rated fire doors to *250° (121°C) maximum
- Solid mineral fiber core
- Inverted end channels welded to both face sheets
- 7 gauge (4.2 mm) steel hinge reinforcement

*250°F (121°C) maximum temperature rise at the end of the first 30 minutes of fire test.

Available Options

- Galvannealed or galvanized steel
- Seamless design by application of epoxy filler or continuous welding
- Steel channel filler cap
- 14 gauge closer reinforcement
- Colorstyle factory finish (see page 46)
- ElectroLynx® pre-wired quick connect cable (see page 36)



1. Full flush temperature rise fire door rated for light to extra-heavy duty use.
2. Satisfies local building code requirements for temperature rise rated fire doors to 250° (121°C) maximum.
3. Solid mineral fiber core.

Fuego™/250°

Temperature Rise-Rated Core Fire Door

DOOR LEVEL AVAILABILITY				
MODEL	TYPE	GAUGE	DEC	MM
LEVEL 2 HEAVY-DUTY COMMERCIAL				
1	Flush	18	0.042	1.0
2	Seamless	18	0.042	1.0
LEVEL 3 EXTRA HEAVY-DUTY COMMERCIAL				
1	Flush	16	0.053	1.3
2	Seamless	16	0.053	1.3
LEVEL 3 EXTRA HEAVY-DUTY COMMERCIAL				
1	Flush	14	0.0567	1.7
2	Seamless	14	0.067	1.7
1	Flush	12	0.093	2.3
2	Seamless	12	0.093	2.3

Performance

- Core material: solid mineral fiber
- Sound Transmission: STC 33
- Designs available: see page 51 for designs

Physical Endurance (Cycle Testing)

20 gauge	Level C	250,000 cycles
18 gauge	Level B	500,000 cycles
16 gauge	Level A	1,000,000 cycles

Fire Label (Rating)

T	20 minute
C	3/4 hour
B	1-1/2 hour
A	3 hour

Maximum Size

Single	40 x 90 (1219mm x 2743mm)
Pair 3 Hours	74 x 90 (2235mm x 2743mm)
Pair 1-1/2 Hours	80 x 90 (2438mm x 2743mm)



Sound-Tech™

Acoustical Noise Reduction System

Ceco's Sound Tech System is designed for mid-range and high-range sound intensity attenuation. Sound Tech's affordable cost and prompt availability encourage use in a wide range of applications, including those where custom sound doors might be considered cost-prohibitive. With acoustical ratings from STC 39 to STC 52, Sound Tech provides cost effective performance with standard 1-3/4" thick door appearance and function.

Features

- 1-3/4" (44.4mm) seamless acoustical design rated for heavy through extra heavy-duty use
- For STC 39 through STC 52 applications
- Acoustical core throughout
- Sound resistant septum
- High mass noise barrier
- Flush top, seamless vertical edges
- Reinforced for closer
- Furnished as a complete system with door, frame, perimeter and bottom sound seals and threshold



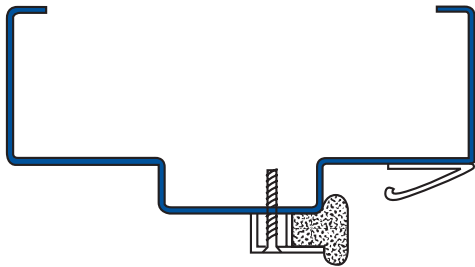
 **Ceco Door**
ASSA ABLOY

ASSA ABLOY, the global leader
in door opening solutions

AREA	SOUND LEVEL	DOOR STC	ADJACENT SPACE	SOUND LEVEL
Band/Music Room	90 dB	STC 52	Private Office	38 dB
Mechanical Room	75 dB	STC 50	Classroom	25 dB
Audio/Visual room	84 dB	STC 49	Conference Room	35 dB
Amplified Sound	86 dB	STC 46	Corridor, Lobby	40 dB

Performance

- Core Material: manufacturer's proprietary standard



Acoustic Steel Frame Profile
Diagram may vary with different products

Maximum Size

Single	40 x 80 (1219mm x 2438mm)
Pair	80 x 80 (2438mm x 2438mm)

Madera™

Wood Grain Steel Doors

Features

- Insulated, general purpose, rated for light to extra heavy-duty use
- The natural beauty of wood in a durable, fire-rated stainable steel door
- Rich wood grain pattern engraved into a stainable steel surface
- Won't warp, rot or wear and weather like wood
- Moisture and vermin resistant
- Galvannealed steel face sheets
- Factory finished in stained natural wood tones with accessories and trim to match
- Tough, clear top coat with Ultra Violet (UV) protectors
- Glass lights feature frame trim finished to match door
- Handed door for use in single or paired openings
- Polystyrene core provides structural strength and resists impact
- Doors may be fire-rated to 3 hours, following typical fire-rated door restrictions based on series, gauge and size

Available Options

- Astragals for pairs of doors are available in an "h" profile, screw applied to door edge, and are stained to match the color of the door
- Embossed 6 panel designs (see page 51 for Designs)
- Steel end channel filler cap
- ElectroLynx® pre-wired quick connect cable (see page 36)



DOOR LEVEL AVAILABILITY				
MODEL	TYPE	GAUGE	DEC	MM
LEVEL 2 HEAVY-DUTY COMMERCIAL				
1	Flush	18	0.042	1.0
LEVEL 3 EXTRA HEAVY-DUTY COMMERCIAL				
1	Flush	16	0.053	1.3



CS-1 GOLDEN



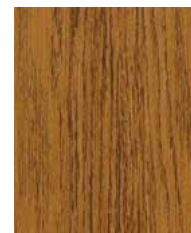
CS-2 AUTUMN



CS-3 BOURBON



CS-4 SALEM



CS-5 PROVINCIAL



CS-6 NUTMEG

Performance

- Core Material: Polystyrene
- Thermal Characteristics: R Factor 6.35 (ASTM C518)
- Sound Transmission: STC 23 (18 gauge operable)

Physical Endurance (Cycle Testing)

20 gauge	Level C	250,000 cycles
18 gauge	Level B	2,000,000 cycles
16 gauge	Level A	2,000,000 cycles

Fire Label (Rating): see page 43 for additional information on fire doors

T	20 minute
C	3/4 hour
O	1 hour
B	1-1/2 hour
A	3 hour

Maximum Size

Single	40 x 80 (1219mm x 2438mm)
Pair	80 x 80 (2438mm x 2438mm)

***Not all ratings are available in all sizes, designs and material**

StormPro™

Severe Weather Door and Frame System

The Absolute Best In Severe Weather Protection.

Features

Strong gusts of wind, up to 70 miles per hour, are not uncommon, but sustained winds of that magnitude, or higher, are generally associated with tornados, hurricanes, and tropical storms. The potential for loss of lives and a great deal of damage is routine with these storms.

In tornados, the added load caused by wind is a major cause of damage to buildings and property. In addition to severe winds, tornadoes generate extremely high positive and negative pressures that create forces strong enough to pick up and carry debris known as wind-blown missiles. These missiles move with enough force to penetrate windows, doors, walls, and other parts of a building. Damaged buildings are susceptible to collapse, so occupants require more than just a simple dry shelter to survive.

While protecting property is not always possible, protecting lives is critical. That's why we developed StormPro. In the mid-80s, Homeland Security, Federal Emergency Management Agency, established guidelines for the design and testing of doors used in shelters. To meet the guidelines, StormPro doors were subjected to Design Wind Pressure tests to simulate negative tornado pressure, and Missile Impact Load tests, where 2" x 4" wood sections were fired at the door face in three locations. StormPro passed the tests, remained closed and didn't allow missile penetration.

Today, StormPro is available in either a swing-in or swing-out design, in either single door or paired door openings.



StormPro Doors Hardware Application

Assemblies Meet Certification for both Fire and FEMA requirements

Hardware Series Description	Configuration	Mullion	FEMA Designation	FEMA Size	Maximum Fire Rating UL10-C	Door Core	Minimum Door-Frame Gauge	Standard Undercut	Max. U/C	Min. U/C	Frame Depth Min.-Max.
Corbin Russwin FE6800 Multi-Point Lock*	Single Inswing Outswing	N/A	320 & 361	40X80 ^{max}	30 X 70 40 X 80	Polyurethane Honeycomb	14 - 14	5 / 8"	5 / 8"	1 / 4"	5-3/4"-14"
Corbin Russwin FE6800 Multi-Point Lock*	Shutters Inswing Outswing	N/A	320 & 361	40X80 ^{max} 26 X 56 ^{min}	30 X 70 40 X 80	Polyurethane Honeycomb	14 - 14	5 / 8"	5 / 8"	1 / 4"	5-3/4"-14"
Sargent FM8700* (2-Point)	Pair Outswing	Sargent HC980	361	60X70 ^{max}	60 X 70 (Hyc.Only)	Polystyrene Honeycomb	16 - 16	5 / 8"	5 / 8"	1 / 4"	5-3/4"-14"
Sargent FM8700* (2-Point)	Single Outswing	N/A	361	30X70 ^{max}	30 X 70 (Hyc.Only)	Polystyrene Honeycomb	16 - 16	5 / 8"	5 / 8"	1 / 4"	5-3/4"-14"
(3) Medeco Maxum Deadbolts x Sargent 10 Line	Single Inswing Outswing	N/A	320	30 X 70 ^{max}	30 X 70	Steel Stiffened	14 - 16	5 / 8"	5 / 8"	1 / 4"	5-3/4"-14"

* UL Certification to FEMA Standards

Important Notes and Options :

- Frame Head Face: 2" Standard, Optional 4"
- Anchors: Masonry & Existing Opening
- Material: Galv. - CRS
- Lock Hardware: Electronic Trims available with ElectroLynx Connectors (Reference Hardware Templates for details)
- Hinges: 4-1/2" x 4-1/2". 180 Stainless Steel Ball Bearing Hinges minimum, Continuous Hinges Optional
- Undercut determined by door condition (Reference Hardware template for details)

Test Procedures:

- FEMA 361, Design and Construction Guidance for Community Shelters. Federal Emergency Management Agency. First Edition, July 2000.
- Association Standard for the Design, Construction and Performance of Storm Shelters. National Storm Shelter Association (NSSA) April 2001.
- ASTM E 330-97, Standard Test Method for Structural Performance of Exterior Windows, Curtain Walls and Doors by Uniform Static Air Pressure Difference.
- FEMA 320, October 1998, "Taking Shelter from the Storm" March 2004.



Medallion Maxim™

The Vandal-Resistant Door and Frame System

Guaranteed To Last As Long As The School Building Itself.

Medallion Maxim doors were design engineered for long-lasting performance in educational buildings. Internal steel stiffeners, spaced 6" apart, are welded to the door face surfaces every 5" for a maximum-duty rating. The door features a lifetime warranty.

Features

- Steel stiffened core
- 1-3/4" (44.4mm) custom construction seam/seamless design - rated for heavy duty to maximum-duty use
- Designed for high frequency, severe traffic openings
- Internal steel stiffeners welded to face sheets
- Rock wool insulation limits thermal and sound transmission
- Lock edge beveled 1/8" in 2" (1:16)
- Inverted end channels welded to both face sheets
- 7 gauge (4.2mm) steel hinge reinforcement
- Rust inhibitive prime paint base coat meets ANSI A250.10

Available Options

- 14 gauge (1.7mm) or 12 gauge (2.3mm) closer reinforcement
- Galvanized steel
- Steel end channel filler cap
- Flush welded glass lite trim kits
- ElectroLynx® pre-wired quick connect cable (see page 36)
- Colorstyle factory finish (see page 46)
- Welded edge seams enhance strength and appearance



1. Designed for high frequency, severe traffic openings.
2. Steel stiffened core with stiffeners welded to the face sheets for strength.
3. Custom seam/seamless design rated for heavy-duty to maximum-duty use.

 **Ceco Door**
ASSA ABLOY

ASSA ABLOY, the global leader
in door opening solutions

Medallion Maxim™

The Vandal-Resistant Door and Frame System

DOOR LEVEL AVAILABILITY				
MODEL	TYPE	GAUGE	DEC	MM
LEVEL 4 MAXIMUM-DUTY COMMERCIAL				
1	Flush	14	0.067	1.7
2	Seamless	14	0.067	1.7

Performance

- Core Material: Steel stiffeners/Fiberglass Batt insulation
- Sound Transmission: STC 38
- Designs available: see page 51 for designs

Physical Endurance (Cycle Testing)

14 gauge	Level A	1,000,000 cycles
----------	---------	------------------

Maximum Size

Single	40 x 90 (1219mm x 2743mm)
Pair	80 x 90 (2438mm x 2743mm)



Imperial Maxim™

The Vandal-Resistant Door and Frame System

Guaranteed To Last As Long As The School Building Itself.

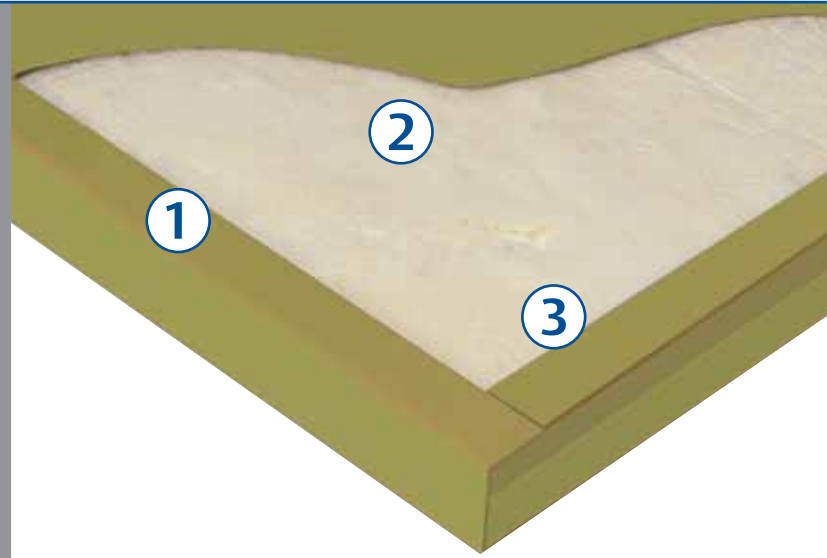
Imperial Maxim doors provide long-lasting performance. A foamed-in-place polyurethane core provides total surface reinforcement, giving the well insulated seamless door a maximum-duty rating. We guarantee the door to last as long as the school building itself.

Features

- 1-3/4" (44.4 mm) insulated seamless design rated for maximum-duty use
- Exceptional thermal and impact resistance
- Foamed-in-place polyurethane core
- Inverted end channels welded to both face sheets
- 7 gauge (4.2mm) steel hinge reinforcement
- Electrostatically applied prime base coat

Available Options

- 14 gauge closer reinforcement
- Galvannealed steel
- Steel end channel filler cap
- Steel glass lite trim kits
- ElectroLynx® pre-wired quick connect cable (see page 36)
- Colorstyle factory finish (see page 46)



1. Insulated seamless design rated for maximum-duty use.
2. Exceptional thermal and impact resistance.
3. Inverted end channels welded to both face sheets for added strength.

 **Ceco Door**
ASSA ABLOY

ASSA ABLOY, the global leader
in door opening solutions

Imperial Maxim™

The Vandal-Resistant Door and Frame System

DOOR LEVEL AVAILABILITY				
MODEL	TYPE	GAUGE	DEC	MM
LEVEL 4 MAXIMUM-DUTY COMMERCIAL				
2	Seamless	14	0.067	1.7

Performance

- Core Material: Polyurethane
- Thermal Characteristics: R Factor 11.01 (ASTM C518)
- Sound Transmission: STC 26
- Designs available: see page 51 for designs

Physical Endurance (Cycle Testing)

14 gauge	Level A	1,000,000 cycles
----------	---------	------------------

Maximum Size

Single	40 x 90 (1219mm x 2743mm)
Pair	80 x 90 (2438mm x 2743mm)



 **Ceco Door**

ASSA ABLOY

ASSA ABLOY, the global leader
in door opening solutions

ThruLite™

Stile and Rail Door Assembly

Features

- 1-3/4" (44.4mm) insulated tubular seamless construction rated for extra heavy-duty use
- Ideal for building entrance, schools, hotels, theaters
- 16 gauge (1.3mm) reinforced fully welded construction
- 5-5/8" (144mm) stiles and top rail
- 12" (305mm) bottom rail
- Integral flush glazing
- Glass size 1/4" (6mm) to 1" (25mm)
- Flush tubular steel door top
- 7 gauge (4.2mm) steel hinge reinforcement

Available Options

- 3-5/8" (92mm) and 7-5/8" stiles and top rail
- Optional center rail(s)
- 10" (254mm), 14" (356mm), or 16" (406mm) bottom rail
- Closer reinforcement
- Galvannealed steel
- ElectroLynx® pre-wired quick connect cable (see page 36)



DOOR LEVEL AVAILABILITY				
MODEL	TYPE	GAUGE	DEC	MM
LEVEL 3 EXTRA HEAVY-DUTY COMMERCIAL				
3	Stile & Rail	16	0.053	1.3

Performance

- Sound Transmission: STC 29 (operable)
- Fire Rating: 20 minute or 45 minute
- Designs Available: see page 42 for designs

Maximum Size

Single	40 x 80 (1219mm x 2438mm)
Pair	80 x 80 (2438mm x 2438mm)



ASSA ABLOY, the global leader
in door opening solutions

DOOR LEVEL AVAILABILITY				
MODEL	TYPE	GAUGE	DEC	MM
LEVEL 2 HEAVY-DUTY COMMERCIAL				
1	Flush	18	0042	1.0
2	Seamless	18	0.042	1.0
LEVEL 3 EXTRA HEAVY-DUTY COMMERCIAL				
1	Flush	16	0.053	1.3
2	Seamless	16	0.053	1.3

Performance

- Core Material: Non-combustible U.S. Coast Guard approved
- Sound Transmission: STC 38 (operable)
- Labeling: Bears U.S. Coast Guard compliance label: Complies with U.S. Coast Guard requirements as defined in 46CFR72.05-25 for bulkhead doors
- Designs available: see page 51 for designs

Physical Endurance (Cycle Testing)

18 gauge	Level B	500,000 cycles
16 gauge	Level A	1,000,000 cycles

Maximum Size

Single	40 x 90 (1219mm x 2743mm)
Pair	80 x 90 (2438mm x 2743mm)

Features

- 1-3/4" (44.4mm) custom construction seam/seamless design rated for heavy duty to maximum-duty use
- U.S. Coast Guard approved non-combustible insulation limits thermal and sound transmission
- Internal steel stiffeners welded to face sheets
- Inverted end channels welded to both face sheets
- 7 gauge (4.2mm) steel hinge reinforcement
- 18 gauge doors for bulkheads to B-15, 16 gauge up to A-60
- 14 gauge or 16 gauge welded galvanized 3-sided or 4-sided steel frames for hatchway or deck application
- Integral gasket weatherstrip

Available Options

- 14 or 12 gauge closer reinforcement
- Galvannealed or galvanized steel
- Steel end channel filler cap
- Applied or flush welded glass kits
- ElectroLynx® pre-wired quick connect cable (see page 36)
- Welded edge seams enhance strength and appearance



Stainless-Tech™

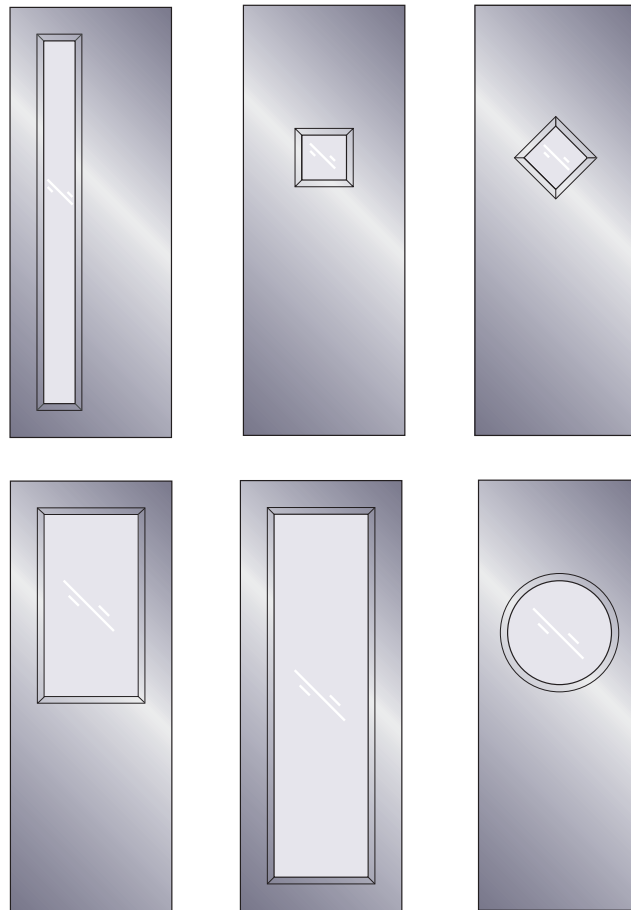
Stainless Steel Door and Frame System

Features

- 1-3/4" (44.4mm) #304 alloy stainless steel full flush
- Construction rated for heavy-duty through maximum-duty use
- Ideal for high-style architectural environments: health care, pharmaceutical, sanitation, natatorium, water treatment, chemical plants, coastal areas
- Polystyrene core provides insulation characteristics and resistance to impact
- Core is chemically bonded to face sheets providing total surface support
- Hemmed hairline vertical edge seams for added strength and rigidity

Available Options

- Seamless design by continuous welding
- #316 alloy high corrosive-resistant stainless steel
- Honeycomb, polyurethane core chemically bonded to face sheets
- Vertically steel stiffened core with mineral rock wool or fiberglass batt insulation between stiffeners
- 12 gauge (2.3mm) closer reinforcement
- Stainless flush top closure cap
- Various surface finishes and textures
- Seamless flush top and bottom
- Stainless steel glass trim kits



Stainless-Tech™

Stainless Steel Door and Frame System

DOOR LEVEL AVAILABILITY				
MODEL	TYPE	GAUGE	DEC	MM
LEVEL 2 HEAVY-DUTY COMMERCIAL				
1	Flush	18	0.042	1.0
2	Seamless	18	0.042	1.0
LEVEL 3 EXTRA HEAVY-DUTY COMMERCIAL				
1	Flush	16	0.053	1.3
2	Seamless	16	0.053	1.3
LEVEL 4 MAXIMUM-DUTY COMMERCIAL				
2	Seamless	14	0.067	1.7
2	Seamless	12	0.093	2.3

Performance

- Core Material: Polystyrene
- Thermal characteristics: U Factor 0.31, R Factor 3.23
- Sound Transmission: STC 23 (18 gauge operable)
- Designs Available: see page 51 for designs

Physical Endurance (Cycle Testing)

18 gauge	Level B	500,000 cycles
16 gauge	Level A	1,000,000 cycles


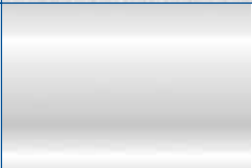
Maximum Size

Single	40 x 90 (1219mm x 2743mm)
Pair	80 x 90 (2438mm x 2743mm)

Fire Rating

T	20 minute
C	3/4 hour
B	1-1/2 hour
A	3 hour

Finishes

No. 4	A general purpose bright finish with a visible "grain" which prevents mirror reflection.	
No. 8 (Mirror)	The most reflective surface. For applications where a mirror or reflector finish is desirable.	

Armorshield™

Bullet Resistant Door and Frame System

Features

- 1-3/4" (44.4mm) custom construction seam/seamless design rated for heavy duty to maximum-duty use
- ArmorShield is effective against a wide range of firearms when used with structures similarly rated
- Designed for openings where a bullet resistance rated door is a requirement, such as utility field buildings, cashier islands, ticket booths, currency exchanges, box offices, courthouses, casinos
- Internal door construction and concealed armorplate vary and is dependent on the required ballistic rating
- 7 gauge (4.2mm) steel hinge reinforcement
- Inverted end channels welded to both face sheets
- Rust inhibitive prime paint base coat meets ANSI A250.10
- Lock edge beveled 1/8" in 2" (1:16)

Available Options

- Galvannealed or galvanized steel
- Polystyrene or Steel Stiffened core
- Steel end channel filler cap
- Bullet resistant glass lite kits
- ElectroLynx® pre-wired quick connect cable (see page 36)
Up to level 3
- Fully welded vertical edge seams for enhanced strength and aesthetic appearance



DOOR LEVEL AVAILABILITY				
MODEL	TYPE	GAUGE	DEC	MM
LEVEL 3 EXTRA HEAVY-DUTY COMMERCIAL				
1	Flush	16	0.053	1.3
2	Seamless	16	0.053	1.3
1	Flush	14	0.067	1.7
2	Seamless	14	0.067	1.7
1	Flush	12	0.093	2.3
2	Seamless	12	0.093	2.3

BALLISTIC LEVEL	LEVEL 1 MEDIUM POWER (MPSA)	LEVEL 2 HIGH POWER (HPSA)	LEVEL 3 SUPER POWER (SPSA)	LEVEL 4 30-06 HUNTING SPORT RIFLE
WEAPON	Super 38 Automatic	.357 Magnum Revolver	.44 Magnum Revolver	30-06 Rifle
BULLET TYPE	130 Grain Metal Case	158 Grain Soft Point	240 Grain Soft Point	220 Grain Springfield
MUZZLE VELOCITY	1,280 FPS (390 MPS)	1,450 FPS (442 MPS)	1,470 FPS (448 MPS)	2,523 FPS (769 MPS)
MUZZLE ENERGY	475 Ft. Lb. (7.07mbar)	740 Ft. Lb. (11.01 mbar)	1,250 Ft. Lb. (18.60 mbar)	3,102 Ft. Lb. (46.16 mbar)

Physical Endurance (Cycle Testing)

16 gauge	Level A	1,000,000 cycles
14 gauge	Level A	1,000,000 cycles
12 gauge	Level A	1,000,000 cycles

Maximum Size

Single	40 x 90 (1219mm x 2743mm)
Pair	80 x 90 (2438mm x 2743mm)

Fire Rating

T	20 minute
C	3/4 hour
B	1-1/2 hour
40 x 80 (1219mm x 2438mm) Flush Design, 14 or 16 gauge	

RestrictDor™

Security Door and Frame System

Developed for areas where vandalism is a problem or containment is a requirement.

Features

- 2" (50.8mm) thick custom construction seamless design rated for Extra Heavy-Duty or Maximum duty, interior or exterior use
- Designed for openings where detention, retention or security must be addressed such as holding areas in public venues - courthouses, stadiums, shopping centers, casinos.
- Extra strong 18 gauge (1.0mm) vertical steel stiffeners placed 4" (101.6mm) apart and welded to the face sheets every 3-1/2" (88.9mm) along their length.
- Fully welded vertical edge seams for enhanced strength and aesthetic appearance
- Fiberglass batt insulation between stiffeners to limit thermal and sound transmission
- Lock and hinge edge beveled 1/8" in 2" (1:16)
- 12 gauge (2.3mm) closer reinforcement
- 10 gauge (3.1 mm) inverted steel end channels welded to both face sheets
- 7 gauge (4.2 mm) steel hinge reinforcement
- Neutral prime base coat

Available Options

- Galvannealed or galvanized steel
- ElectroLynx® pre-wired quick connect cable (see page 36)
- Steel end channel filler cap
- Flush welded glass lite trim kits
- 12 gauge Level 3 Rated Bullet Resistance



 **Ceco Door**
ASSA ABLOY

ASSA ABLOY, the global leader
in door opening solutions

RestrictDor™

Security Door and Frame System

DOOR LEVEL AVAILABILITY				
MODEL	TYPE	GAUGE	DEC	MM
COMMERCIAL SECURITY PRODUCTS				
2	Seamless	14	0.067	1.6
2	Seamless	12	0.093	2.3

Physical Endurance (Cycle Testing)

14 gauge	Level A	1,000,000 cycles
12 gauge	Level A	1,000,000 cycles



Maximum Size

Single	40 x 80 (1219 mm x 2438mm)
Pair	80 x 80 (2438 mm x 2438mm)

Fire Rating

T	20 minute
C	3/4 hour
B	1-1/2 hour
A	3 hour

ElectroLynx®

Hardwiring Made Easy®

Installation and maintenance of electrified openings is easy with ElectroLynx, a system of standardized plug-in connectors and wiring.

Pre-wired doors and hardware with snap-together connectors make adding or upgrading electrified openings easy. Frames come with an ElectroLynx harness for easy installation. There's no need to create connections or drill holes in the opening. Concealed wiring preserves the security, aesthetics and fire rating of the opening.

- Fast and fool-proof installation
- Easy upgrades
- Available from all ASSA ABLOY Group brands

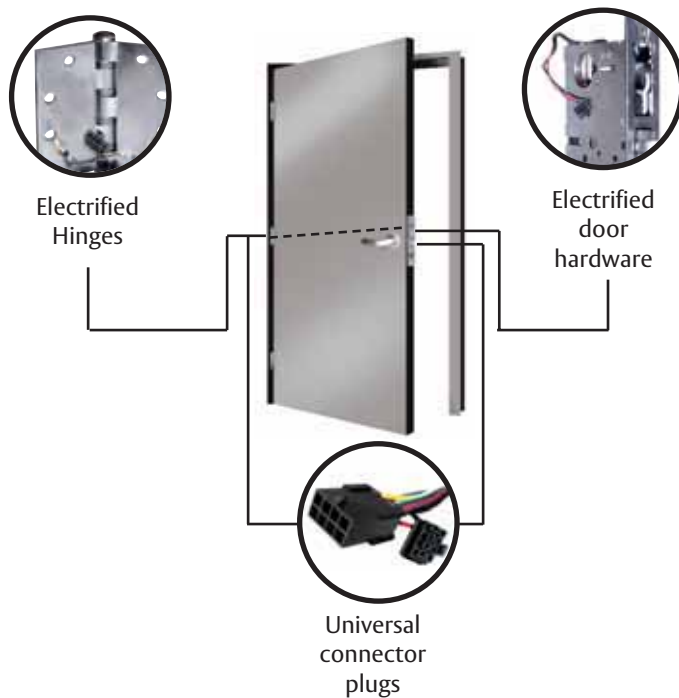
Hardwiring Made Easy®



A short cable connects the exit device to the hinge



ElectroLynx makes it easy to increase security throughout a facility.



Note: All hardware components utilize a female plug. Doors and frames have a male plug to complete the connection.

 **Ceco Door**
ASSA ABLOY

ASSA ABLOY, the global leader
in door opening solutions



Install ReadySet doorways with just minimal tools and the fasteners included with the unit.



A typical installation requires dealing with numerous tools and instruction sheets, hardware installations and painting.

The ReadySet System signifies a new era in installation of door systems. With ReadySet, doorways can be installed in less than 10 minutes, at the end of the project cycle, saving time and eliminating numerous jobsite issues. Our full complement of door, frame and hardware products can be preassembled and delivered to the job-site as completed, functional units - ready for final installation, which takes less than 10 minutes! All opening components—hollow metal and wood doors, frames, and mechanical or electrified door hardware, including locks, exit devices, closers, hinges and door controls—are part of the ReadySet system. These quality components are manufactured by brands that have been leading the security and life-safety industry for generations. Providing more than simply doors and hardware, we bring together all of the products and support to supply easy-to-install, intelligent opening solutions.

All doors, frames and hardware are preassembled and tested for functionality by experienced Certified Assemblers, then shipped to the jobsite for quick and final installation.

- Installation can occur later in the project, after drywalling and painting
- Saves time and numerous jobsite coordination issues
- Hardware arrives correctly installed
- No loose parts to coordinate or secure on site
- Decreased possibility of damage to new doors and frames

Flexible options and a vast selection of custom and standard components make the ReadySet system ideal for interior and exterior openings in new or retrofit applications.

- Complete units available – frame with prehung door and all hardware
- Door-and-hardware-only units available – for applications with existing frames
- Single or double doors
- One lead time and one easy delivery schedule

ReadySet units arrive at the jobsite factory-prefinished and ready for final installation. Doors and frames come in any Pantone or custom color, and hardware is offered in many popular finishes.

- Patent pending integrated 2-piece frame
- Welded, mitered corners on frames

Security SideLite

Visual Barrier to Potential Intruders

Features

- Hinged security panel closes to create a visual barrier
- Glass pockets available up to 1" thick glass
- Prepared for self latching deadbolt to meet project requirements
- Standard 4-1/2" x .134 hinge preparations
- Provides a visual barrier when required
- WH fire rated for 45 minutes, 90 minute rating available with approved fire glass
- Available with either hollow metal or wood doors
- Jamb depths available 6-3/4" or larger
- 16 or 14 gauge, cold rolled or galvanized material

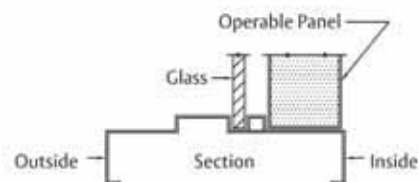
Uses

Classrooms

Post Offices

Government Facilities

Airports



 **Ceco Door**
ASSA ABLOY

ASSA ABLOY, the global leader
in door opening solutions

Privacy Sidelite

Instant Visual Barrier Control



When extra privacy & security are needed...



Just flip the switch.

Our new Privacy Sidelite uses “switchable” glass that can change from clear to opaque with a simple flip of a switch providing a more private environment.

The Privacy Sidelite can also integrate fail-secure locking hardware for an extra layer of security.

Ideal for:

- Law Offices
- Post Offices
- Banks
- Healthcare Industry
- Schools & Universities

Features

- Switchable Privacy Glass to Create a Visual Barrier
- Available with or without Fail-Secure Lockset Powered by ElectroLynx

Standards

- 3070 Door Opening
- 3/4" High Stops Required
- Nominal 18" Wide Sidelite
- 4" Face Sill For Full Sidelite
- 2" Face Sill For Half Sidelite

Options

- Available with Masonry and Stud Wall Anchors
- Available with 10" Sill to meet ADA requirements

Hardwiring Made Easy®



 **Ceco Door**

ASSA ABLOY

ASSA ABLOY, the global leader
in door opening solutions

Sight Light™ System

LiteGuide™ Egress Marking System

In an emergency, building tenants have one goal in mind - evacuate! Oftentimes during this time of high stress, they are presented with only marginal emergency lighting to navigate out of the building. Sometimes, no light at all. Accompanied by fire and dense smoke, evacuating becomes an almost impossible task. Pathway marking speeds evacuation in the event of an emergency. Light Guide was designed to assist people in just such emergencies by providing light for building egress. It is aesthetically pleasing when the lights are on, and an absolute necessity when the lights go off.

Photo-Luminescent System

- Bright lighted pathway for up to 90 minutes without power
- Superior illumination formula, product illuminated for days
- Economical. Small areas can be equipped at minimal cost
- No maintenance - only occasional surface cleaning
- No system function checks required, only visual inspections
- Provides egress marking for rescue workers
- Abrasion does not lead to system failure
- System failures are impossible

Electro-Luminescent System

- Provides bright lighted pathway to exit
- Brighter than non-electrified system
- Wired into building's emergency system
- Provides NFPA 101 required 1-1/2 hours of emergency illumination
- System stays bright when illuminated, does not decrease over time
- Not necessary to illuminate to ensure system functionality
- Battery backup ensures system functionality in power failure



Illuminated doorways make it easy for people to locate exits and evacuate quickly.



PL exit signs placed low on the door make exits easy to see in smoky conditions. Shown under normal conditions (left) and fully charged in darkness (right).

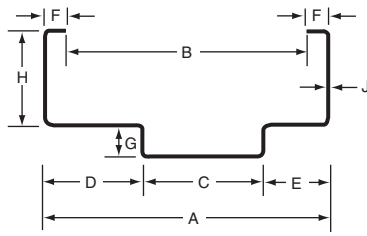
Hardwiring Made Easy®



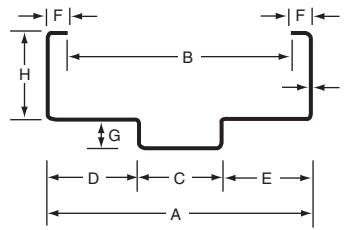
ASSA ABLOY, the global leader
in door opening solutions

Standard Frames

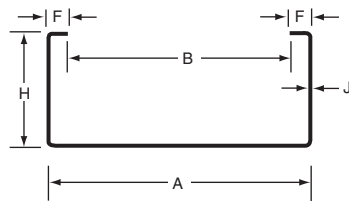
Series SU, SQ, SR and SC Steel Frames



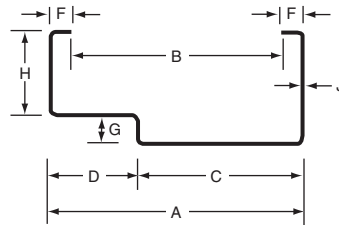
SU



SQ



SC



SR



FRAME SERIES		SQ/ SU DOUBLE RABBET	SR SINGLE RABBET	SC CASED OPEN
FRAME DEPTH	(A)	4 5/8" (117.4mm) through 14" (355.6mm) in 1/8" (3.1mm) increments	3" (76.2mm) through 14" (355.6mm) in 1/8" (3.1mm) increments	3" (76.2mm) through 14" (355.6mm) in 1/8" (3.1mm) increments
THROAT	(B)	Variable	Variable	Variable
SOFFIT	(C)	Variable	Variable	Variable
RABBET	(D)	1-15/16" or 1-9/16"	1-15/16" (49.2mm)	—
RABBET	(E)	1-15/16" or 1-9/16"	—	—
BACKBEND	(F)	Std. 1/2" or Variable All three columns.	Variable	Variable
STOP	(G)	Std 5/8" up to 1-1/4"	Std 5/8" up to 1-1/4"	Std 5/8" up to 1-1/4"
FACE	(H)	Std 2" or 1" through 5"	Std 2" or 1" through 5"	Std 2" or 1" through 5"
STEEL	Gauge	(J)	18, 16, 14, 12	18, 16, 14, 12
	mm		1.0, 1.3, 1.7, 2.3	1.0, 1.3, 1.7, 2.3
	dec		.042, 0.53, .067, .093	.042, 0.53, .067, .093

SU indicates a standard frame with "unequal" frame rabbets

SQ indicates a standard frame with "equal" frame rabbets

SR indicates a standard frame with "one" frame rabbet

SC indicates a standard cased frame with no rabbet



ASSA ABLOY

ASSA ABLOY, the global leader
in door opening solutions

Drywall Frames

Series DU, BU, DQ, BQ, DR and DC Steel Frames



DU/BU



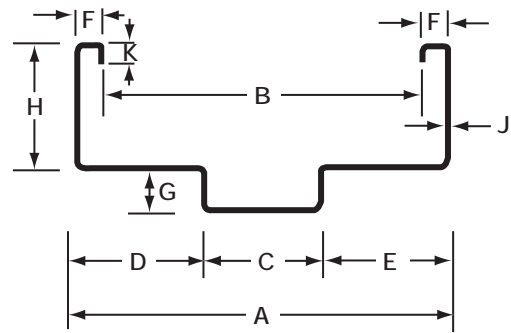
DR



DQ/BQ



DC



FRAME SERIES		DU/DQ & BU/BQ	DR/BR	DC/BC
FRAME DEPTH	(A)	DEPTH: 4-5/8" THROUGH 14" THROAT: 3-5/8" THROUGH 13"	DEPTH: 3-5/8" THROUGH 14" THROAT: 2-5/8" THROUGH 13"	DEPTH: 3-5/8" THROUGH 14" THROAT: 2-5/8" THROUGH 13"
THROAT	(B)			
SOFFIT	(C)	Variable with 3/4" min.	Variable with 3/4" min.	—
RABBET	(D)	1-15/16" or 1-9/16"	1-15/16" (49.2mm)	—
RABBET	(E)	1-15/16" or 1-9/16"	1-15/16" (49.2mm)	—
BACKBEND	(F)	Std. 1/2" or Variable	Std. 1/2" or Variable	Std. 1/2" or Variable
STOP	(G)	Std. 5/8	Std. 5/8	Std. 5/8
FACE	(H)	Std 2" or 1-1/2" through 4"	Std 2" or 1-1/2" through 4"	Std 2" or 1-1/2" through 4"
STEEL	Gauge	18, 16, 14,	18, 16, 14,	18, 16, 14,
	mm	1.0, 1.3, 1.7,	1.0, 1.3, 1.7,	1.0, 1.3, 1.7,
	dec	.042, 0.53, .067	.042, 0.53, .067	.042, 0.53, .067
BACKBEND RETURN	(K)	3/8 Std. or 1/4" through 7/16"	3/8 Std. or 1/4" through 7/16"	3/8 Std. or 1/4" through 7/16"

DU drywall frames have “unequal” rabbets and are designed to be installed AFTER the drywall board.
 BU drywall frames have “unequal” rabbets and are designed to be installed BEFORE the drywall board.
 DQ drywall frames have “equal” frame rabbets and are designed to be installed AFTER the drywall board.
 BQ drywall frames have “equal” frame rabbets and are designed to be installed BEFORE the drywall board.
 DR drywall frames have “one” frame rabbet (single rabbet).
 DC drywall frames with no frame rabbet (cased opening).

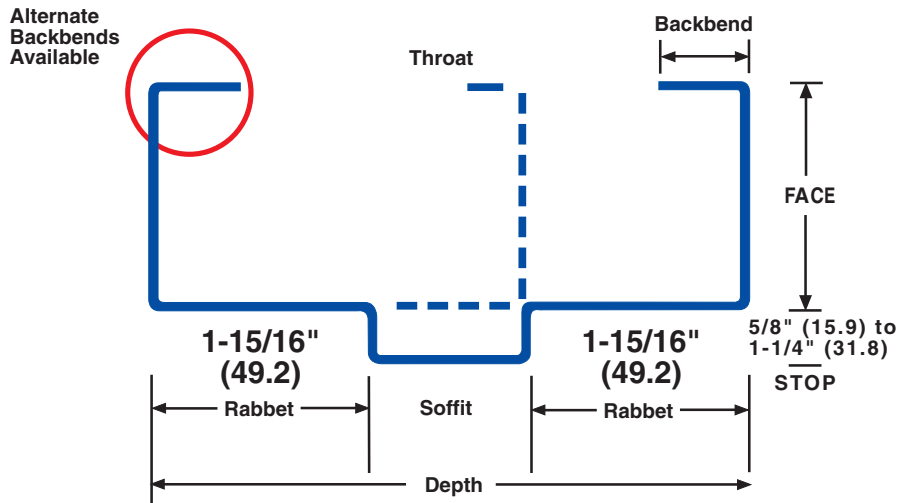
Made-to-Order Frames

Ceco made-to-order frames are available in hundreds of made-to-order combinations, profiles and backbends to suit your design needs:

- 18 gauge
- 16 gauge
- 14 gauge
- 12 gauge
- Cold rolled
- A60 galvanized
- G90 galvanized steel
- Underwriters Laboratories (UL)
- Warnock Hersey (WH)
- Factory Mutual (FM) fire labels

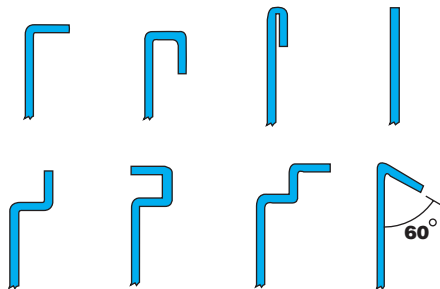
Custom frame profile variables include the DEPTH, THROAT, FACE, RABBET, SOFFIT, and BACKBEND*.

- ElectroLynx® pre-wired quick connect cable (see page 36)

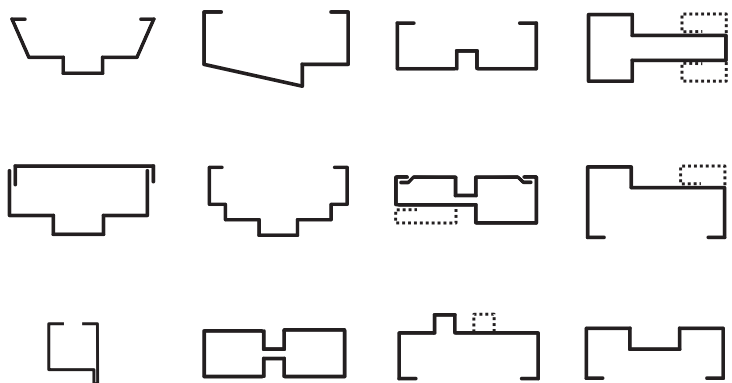


Note: Single Rabbet and cased opening shown dotted.

Alternate Backbends Available



Alternate Profiles Available



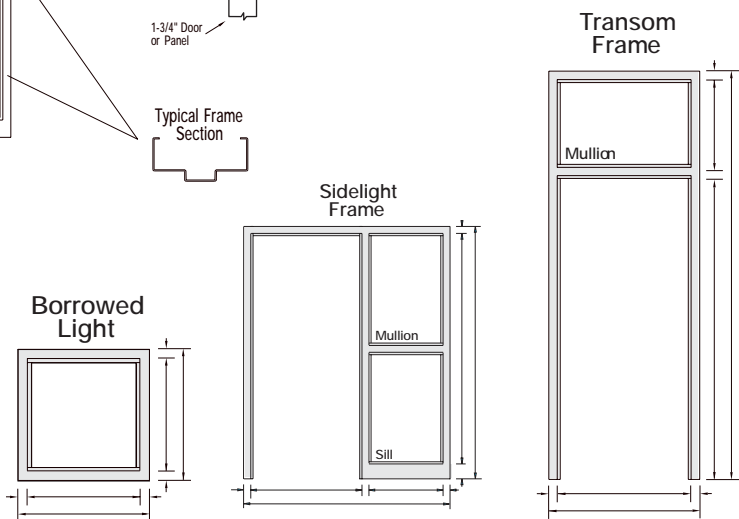
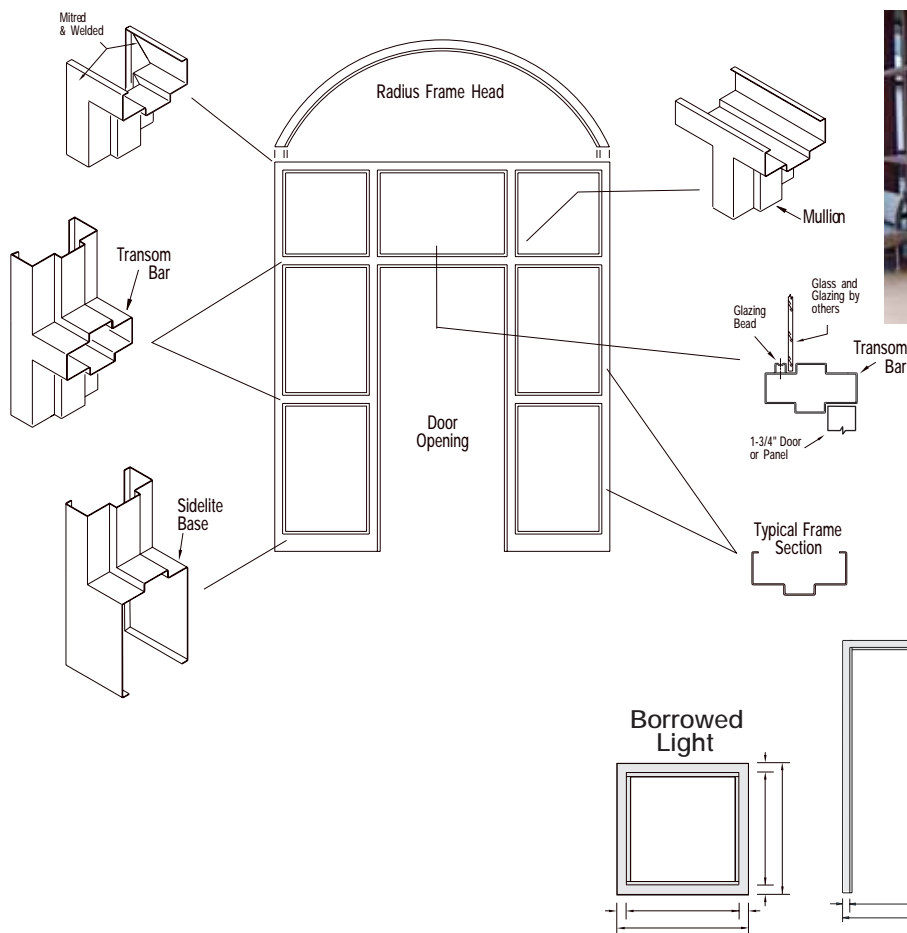
*Made-to-order frame variations are limited by the equipment tooling; please consult us with questions.



ASSA ABLOY, the global leader in door opening solutions

Fabricated Frames

Borrowed Light, Transom and Sidelight Frames

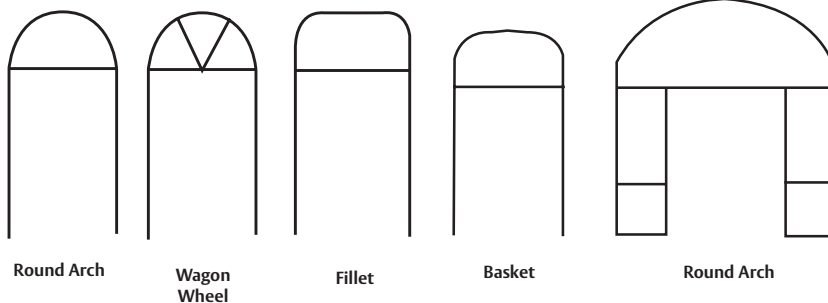


Arched Tech™

Made-To-Order Curved Frame System

Features

- Arched heads or curved-in-plan
- Sidelites, Transoms, Borrowed Lites
- SQ (equal) or SU (un-equal) frame profile
- 4-5/8" through 9-3/4" depth in 1/8" increments
- 14 gauge or 16 gauge cold rolled steel



Available Options

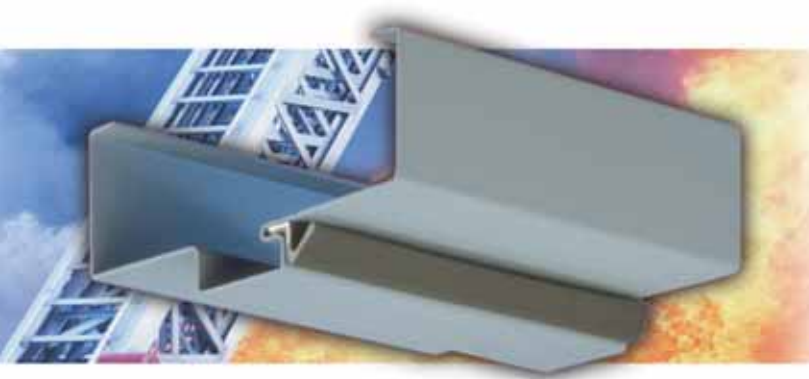
- A60 galvanized steel
- Fire Rating



ASSA ABLOY, the global leader in door opening solutions

Smoke-Tech/Weather Stripped Frames

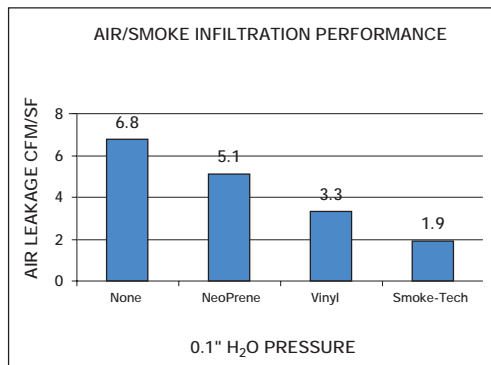
Draft and Smoke Control System



Performance

- Sizes available

Single	40 (1219mm) x 80 (2438mm)
Pair	80 (2438mm) x 80 (2438mm)



Features

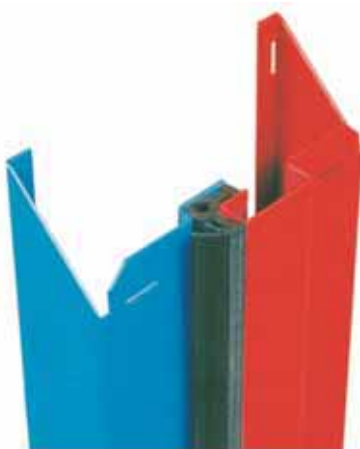
- Effective Smoke Seal meets Life Safety Requirements
- Fire Rated to meet National Fire Codes
- Standard or Drywall profile
- Double or Single Rabbet
- 14, 16, or 18 gauge steel
- Concealed gasket protects system integrity
- Integral kerf formed into door stop
- Knocked down construction
- Mate with a Ceco fire door for complete opening

Available Options

- Galvannealed material
- Setup and welded
- Closer reinforcement
- Sidelites and transom frames
- Fire Rating: 20 min, 3/4 hour, 1 1/2 hour, or 3 hour

Thermal Break

Energy Efficient Frame System



ASSA ABLOY

ASSA ABLOY, the global leader in door opening solutions

Features

- Insulates, eliminates frost build-up
- Energy efficient, seals, prevents drafts
- Positive 3/8" vinyl thermal break
- Integral vinyl weatherstrip
- 14 gauge or 16 gauge steel
- Double or single rabbet
- Knocked down construction
- Made-to-order

Available Options

- Galvannealed or galvanized steel
- Setup and welded with sealed face seams
- Closer reinforcements
- Borrowed lights, sidelites and transom frames

Colorstyle™

Prefinished Doors and Frames

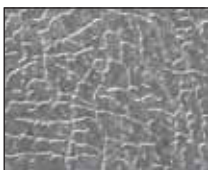
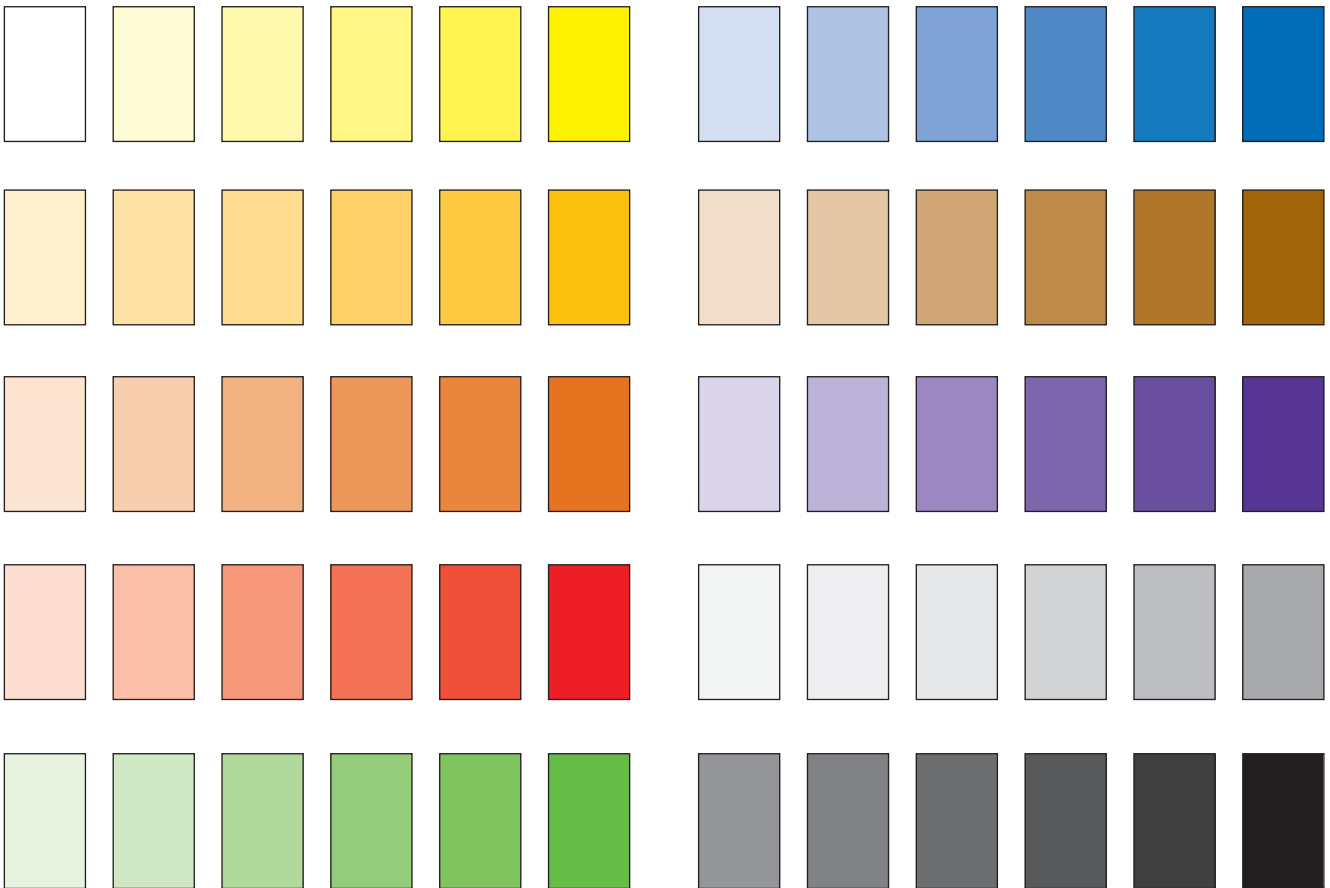
ColorStyle doors and frames are factory-finished commercial grade, standard or custom, full flush or seamless designs with flat blemish-free faces.

Style and design alternatives are available to blend with most any architectural setting.

Features

- Bold eye intriguing or subtle accent colors
- Superior, durable, uniform color finish
- Durability, security, ruggedness of steel
- Aesthetically pleasing designs
- Knocked-down Colorstyle frames also available
- Your Ceco Distributor has complete information

An array of sample colors is shown below; over 1,900 palette colors available



Etched leather grained steel

Smudge-resistant textured steel with factory applied Colorstyle finish. The pattern is a permanent, random design, etched into the steel itself

Colors printed on this page are representative. Actual color selection is made from a color palette book. Contact your Ceco representative for additional information. Applied colors have satin finish. Doors are finish painted to a gloss of 20° +/- 5° as measured on a 60° meter.



ASSA ABLOY, the global leader in door opening solutions

Product Conformance

Conformance to International Specifications and Standards

When properly specified, Ceco doors and frames will conform to the document requirements of the internationally recognized agencies listed below. The list is not all inclusive.

UFGS-08110: Steel Doors and Frames - Unified Facilities Guide Specification
04-01M Section 08110: Veterans Administration Master Specification
A250.3: Test Procedure and Acceptance Criteria for Factory Applied Finish Painted Steel Surfaces for Steel Doors and Frame
ANSI A250.4: Test Procedure and Acceptance Criteria for Physical Endurance for Steel Doors and Hardware Reinforcing
ANSI A250.6: Hardware on Standard Steel Doors (Reinforcement & Application)
ANSI A250.7: Nomenclature: Standard Steel Doors & Frames
ANSI A250.8: Recommended Specifications for Standard Steel Doors and Frames
ANSI A250.10: Test Procedure and Acceptance Criteria for Prime Painted Steel Surfaces for Steel Doors and Frames
ANSI A250.13: Testing and Rating of Severe Windstorm Resistant Components for Swinging Door Assemblies
ANSI/NAAMM HMMA861: Commercial Hollow Metal Doors and Frames
ANSI/NAAMM HMMA863: Guide Specifications for Detention Security Hollow Metal Doors and Frames
ANSI/NAAMM HMMA865: Guide Specifications for Swinging Control Doors and Frames
ANSI/NAAMM HMMA866: Guide Specifications for Stainless Steel Hollow Metal Doors and Frames
ANSI A115: Standard Specifications for Door and Frame Hardware Preparation
ICC/ANSI A117.1: Acceptable and Usable Buildings and facilities
ANSI A156.7: Standard Template Hinge Dimension
ANSI/NFPA 101: Life Safety Code
ANSI/NFPA 105: Installation of Smoke and Draft Control Assemblies
ANSI/NFPA 80: Fire Doors and Windows
ANSI/NFPA 252: Standard Methods of Tests of Door Assemblies
ANSI/NFPA 257: Fire Test of Window Assemblies
BS 476 Parts 20 & 22: Fire Test on Bldg. Mtls. and Structures (British)
CEGS-08110: Steel Doors and Frames - Corps. of Engineers Guide Specification
CFR Title 46: US Coast Guard Requirement
FEMA 320: Taking Shelter from the Storm: Building a Safe Room Inside Your Home
FEMA 361: Design and Construction Guidance for Community Shelters
H-08-1, 0810: Hollow Steel Doors and Frames, Master Guide Spec. VA.
HMMA810: Hollow Metal Doors, NAAMM
HMMA820: Hollow Metal Frames, NAAMM
HMMA860: Hollow Metal Doors and Frames, NAAMM
INTERNATIONAL BUILDING CODE (IBC)
NBR 11742: Fire Test of Door Assemblies (Brazil)
NCH 935 / 2.0: Fire Test of Door Assemblies (Chile)
STATE OF FLORIDA BUILDING CODE - 2004 EDITION
SS 332: Fire Test of Door Assemblies (Singapore)
UBC 7-2: 1997 Fire Test of Door Assemblies Under Positive Pressure
UBC 7-4: Fire Test of Window Assemblies Under Positive Pressure
CAN4-S104-M80 National Standard of Canada Method of Fire Tests of Door Assemblies
UL9: Fire Test of Window Assemblies
UL10B: Fire Test of Door Assemblies
UL10C: Standard for Positive Pressure Fire Tests of Door Assemblies
UL305: Standard for Panic Hardware
UL752: Bullet Resistant Equipment
UL1784: Air Leakage Tests of Door Assemblies

Performance Data

Physical Endurance

Measures a door assembly's ability to resist deterioration caused by use.

Physical endurance testing is a two-part test conducted in conformance with ANSI A250.4 (Door) and ANSI A250.5 (Frame).

The test consists of two parts:

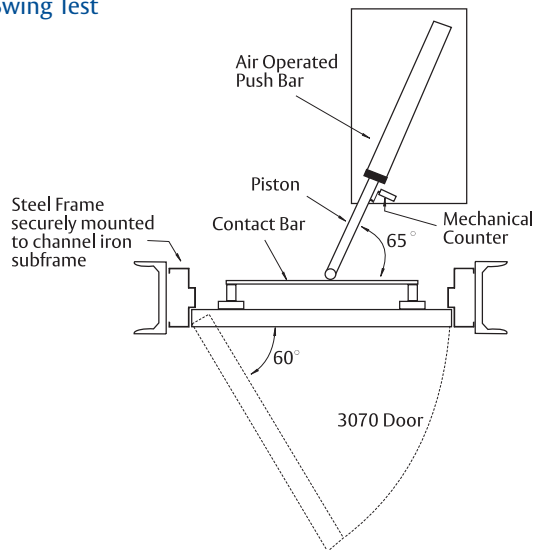
Swing Test: The test door is opened and closed (cycled) mechanically a prescribed number of times.

Ceco Performance

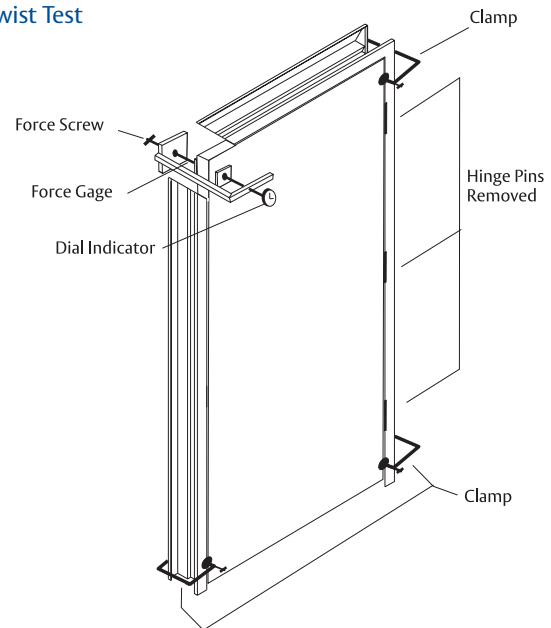
DOOR FACE SHEET	MINIMUM THICKNESS		ANSI A250-4 & 5 - PERFORMANCE LEVELS			
	IP (")	SI (MM)	250,000	500,000	1,000,000	2,000,000
MSG (GAUGE)						
20	.032	0.8	•	•		
18	.042	1.0	•	•	•	•
16	.053	1.3	•	•	•	
16	.067	1.7	•	•	•	

Twist Test: During the Swing Test, a 300# load is applied to the upper lock edge corner of the door to gauge the door's ability to resist permanent deflection. Frequency: Before test begins, then at 25,000 cycles, 50,000 cycles, 75,000 cycles, 100,000 cycles and every 50,000 cycles until the test is completed.

Swing Test



Twist Test



Windstorm (Hurricane)

Product Matrix Listed by Swing, Size and Design Pressure

Ceco Door Products offers a broad range of products tested and approved for use in coastal areas subject to windstorms (hurricanes force winds). Specific commercial hardware

requirements exist for windstorm-tested products. Contact Ceco, or your Ceco Distributor, for information on hardware requirements. The following chart is not all inclusive.

Series	Design Pressure	Dade County	Florida Building	Max. Size	Face	Glazing	Vision Kit Type	Gauge (Min.)	Hand	Undercut	Frame	Gauge (Min.)	Const.	Anchors
Regent	± 60 psf	NA	FL4553	3070	Flush	NA	NA	18	LH, RH	3/4"	FR3PC	16	KD or Weld	MT, EO, MS, WS
Omega	± 60 psf	NA	FL4553	3070	G	1/4" Polycarbonate	Flush Kit	18	LH, RH	3/4"	FR3PC	16	KD or Weld	MT, EO, MS, WS
	± 60 psf	NA	FL4553	3070	FG	Glasslam Safety Plus 2	Flush Kit	18	LH, RH	3/4"	FR3PC	16	KD or Weld	MT, EO, MS, WS
	± 70 psf	NA	FL4553	3070	Flush	NA	NA	18	LH, RH	3/4"	FR3PC	16	KD or Weld	MT, EO, MS, WS
Legion	± 60 psf	NA	FL4553	3080	Flush	NA	NA	18	LHR, RHR	3/4"	FR3PC	16	KD or Weld	MT, EO, MS, WS
Ultra	± 60 psf	NA	FL4553	3080	G	1/4" Polycarbonate	Flush Kit	18	LHR, RHR	3/4"	FR3PC	16	KD or Weld	MT, EO, MS, WS
	± 60 psf	NA	FL4553	3080	FG	Glasslam Safety Plus 2	Flush Kit	18	LHR, RHR	3/4"	FR3PC	16	KD or Weld	MT, EO, MS, WS
	± 70 psf	NA	FL4553	4080	Flush	NA	NA	16	LHR, RHR	3/4"	FR3PC	16	KD or Weld	MT, EO, MS, WS
Medallion	± 60 psf	NA	FL4553	4080	G	1/4" Polycarbonate	Flush Kit	16	LHR, RHR	3/4"	FR3PC	16	KD or Weld	MT, EO, MS, WS
	± 60 psf	NA	FL4553	4080	FG	Glasslam Safety Plus 2	Flush Kit	16	LHR, RHR	3/4"	FR3PC	16	KD or Weld	MT, EO, MS, WS
	± 70 psf	NA	FL4553	8080	Flush	NA	NA	16	LHR, RHR	3/4"	FR3PC	16	KD or Weld	MT, EO, MS, WS
	± 60 psf	NA	FL4553	8080	G	1/4" Polycarbonate	Flush Kit	16	LHR, RHR	3/4"	FR3PC	16	KD or Weld	MT, EO, MS, WS
	± 60 psf	NA	FL4553	8080	FG	Glasslam Safety Plus 2	Flush Kit	16	LHR, RHR	3/4"	FR3PC	16	KD or Weld	MT, EO, MS, WS
	± 70 psf	NA	FL4553	8080	Flush	NA	NA	16	LHR, RHR	3/4"	FR3PC	16	KD or Weld	MT, EO, MS, WS
	± 60 psf	NA	FL4553	8080	G	1/4" Polycarbonate	Flush Kit	16	LHR, RHR	3/4"	FR3PC	16	KD or Weld	MT, EO, MS, WS
	± 60 psf	NA	FL4553	8080	FG	Glasslam Safety Plus 2	Flush Kit	16	LHR, RHR	3/4"	FR3PC	16	KD or Weld	MT, EO, MS, WS
Regent	± 85-60 psf	NA	FL4553	3070	Flush	NA	NA	16	LHR, RHR	3/4"	FR3PC	16	KD or Weld	MT, EO, MS, WS
Imperial	± 70 psf	NA	FL4553	3070	Flush	NA	NA	18	LH, RH	3/4"	FR3PC	16	KD or Weld	MT, EO, MS, WS
Versadoor	± 60 psf	NA	FL4553	3080	Flush	NA	NA	18	LH, RH	3/4"	FR3PC	16	KD or Weld	MT, EO, MS, WS
	± 60 psf	NA	FL4553	3080	Flush	NA	NA	18	LHR, RHR	3/4"	FR3PC	16	KD or Weld	MT, EO, MS, WS
	± 70 psf	NA	FL4553	4080	Flush	NA	NA	16	LH, RH	3/4"	FR3PC	16	KD or Weld	MT, EO, MS, WS
	± 70 psf	NA	FL4553	3080	Flush	NA	NA	16	LHR, RHR	3/4"	FR3PC	16	KD or Weld	MT, EO, MS, WS
	± 70 psf	NA	FL4553	8080	Flush	NA	NA	16	LHR, RHR	3/4"	FR3PC	16	KD or Weld	MT, EO, MS, WS
	± 70 psf	05-0809.02	FL3410	4070	Flush, E6	NA	NA	16	LHR, RHR	3/8"	FR3PC	16	Weld	MT, EO
	± 70 psf	05-0809.02	FL3410	8070	Flush, G	Glasslam Safety Plus 2	Type 2	16	LHR, RHR	3/8"	FR3PC	16	Weld	MT, EO
Fuego	± 60 psf	NA	FL4553	3070	Flush	NA	NA	18	LH, RH	3/4"	FR3PC	16	KD or Weld	MT, EO, MS, WS
	± 70 psf	NA	FL4553	3070	Flush	NA	NA	18	LH, RH	3/4"	FR3PC	16	KD or Weld	MT, EO, MS, WS
	± 60 psf	NA	FL4553	3070	Flush	NA	NA	18	LHR, RHR	3/4"	FR3PC	16	KD or Weld	MT, EO, MS, WS
	± 70 psf	NA	FL4553	4080	Flush	NA	NA	16	LHR, RHR	3/4"	FR3PC	16	KD or Weld	MT, EO, MS, WS
	± 70 psf	NA	FL4553	8080	Flush	NA	NA	16	LHR, RHR	3/4"	FR3PC	16	KD or Weld	MT, EO, MS, WS
Frames SU, SQ	± 60 psf	NA	FL4553	12'-8" x 10'-6"	2" - 4"	Glasslam Safety Plus 2	NA	NA	NA	NA	FRBL	16	Weld	MT, EO, MS, WS
	± 60 psf	NA	FL4553	12'-8" x 10'-6"	2" - 4"	Glasslam Safety Plus 2	NA	NA	NA	NA	FRSL	16	Weld	MT, EO, MS, WS
	± 60 psf	NA	FL4553	12'-8" x 10'-6"	2" - 4"	Glasslam Safety Plus 2	NA	NA	NA	NA	FRTF	16	Weld	MT, EO, MS, WS

Standard Door Sizes

Door Thickness 1-3/4" (44.4mm) Unless Noted

A Regent™/Omega™, Legion™/Ultra™, Imperial Maxim™ /Versadoor™, Marine-Tech™

B Medallion™, Medallion Maxim™

C RestrictDor™ 2" (50.8mm) thickness, Armorshield™, ThruLite™, Fuego™, Stainless-Tech™, Sound-Tech™, StormPro™

D Madera™

Door Opening Width	DOOR OPENING HEIGHT								
	6'8" (2032mm)	6'10" (2083mm)	7'0" (2134mm)	7'2" (2184mm)	7'10" (2388mm)	8'0" (2438mm)	9'0" (2743mm)	10'0" (3084mm)	DOORS OVER 10'0" HEIGHT
2'0" (610mm)	A, B, C, D	A, B, C, D	A, B, C, D	A, B, C, D	A, B, C, D	A, B, C, D			
2'4" (711mm)	A, B, C, D	A, B, C, D	A, B, C, D	A, B, C, D	A, B, C, D	A, B, C, D			
2'6" (762mm)	A, B, C, D	A, B, C, D	A, B, C, D	A, B, C, D	A, B, C, D	A, B, C, D			
2'8" (813mm)	A, B, C, D	A, B, C, D	A, B, C, D	A, B, C, D	A, B, C, D	A, B, C, D			
2'10" (864mm)	A, B, C, D	A, B, C, D	A, B, C, D	A, B, C, D	A, B, C, D	A, B, C, D			
3'0" (914mm)	A, B, C, D	A, B, C, D	A, B, C, D	A, B, C, D	A, B, C, D	A, B, C, D	A, B	B	
3'4" (1016mm)	A, B, C, D	A, B, C, D	A, B, C, D	A, B, C, D	A, B, C, D	A, B, C, D	A, B	B	
3'6" (1067mm)	A, B, C, D	A, B, C, D	A, B, C, D	A, B, C, D	A, B, C, D	A, B, C, D	A, B	B	
3'8" (1118mm)	A, B, C	A, B, C	A, B, C	A, B, C	A, B, C	A, B, C	A, B	B	
3'10" 1168mm)	A, B, C	A, B, C	A, B, C	A, B, C	A, B, C	A, B, C	A, B	B	
4'0" (1219mm)	A, B, C	A, B, C	A, B, C	A, B, C	A, B, C	A, B, C	A, B	B	
5'0" (1524mm)								B	B
DOORS OVER 5'0" WIDE								B	B

Sizes shown are for single doors. Use twice the width for pairs of doors.

Relative Pricing of Doors & Frames

Doors

The price of a standard flush (F) design, Regent door was used as a base 1.00. Doors are 18 gauge unless otherwise noted.

Frames

The price of a 5-3/4" depth, Series SU, 3'0" x 7'0" size was used as base 1.00. Frames are 16 gauge.

DOOR	FACTOR	DOOR	FACTOR	FRAME	FACTOR
Regent	1.00	Medallion	1.25	Series SU 5-3/4"	1.00
Regent 20 gauge	0.90	Medallion 16 gauge	1.39	Series SU 5-3/4" Labeled Fire Frame	1.10
Omega	1.02	Medallion 450° Fire Door	1.45	Series SQ 5-3/4"	1.00
Regent Labeled Fire Door	1.13	Fuego 250° Fire Door	1.56	Series DU 5-3/4"	1.09
Regent 1/2 Glass Design	1.37	ThruLite 16 gauge Full Glass	2.24	Series DQ 5-3/4"	1.09
Legion	1.10	Sound-Tech STC50	15.88	Series SQW 5-3/4" Weatherstrip	1.61
Legion 20 gauge	1.00	Stainless-Tech	8.34	CCA 5-1/4" Custom Profile	2.03
UltraDor	1.12	StormPro 361	5.53	CCC 5-3/4" Custom Profile	2.03
Imperial	1.45	ArmorShield 16 Gauge	3.88	CCE 6-1/4" Custom Profile	2.07
Imperial 1/2 Glass Design	1.59	RestrictDor 14 Gauge	3.16	CCI 7-1/4" Custom Profile	2.12
VersaDoor	1.47	Marine-Tech 16 Gauge	1.66	SQT 5-3/4" Thermal Break	4.02

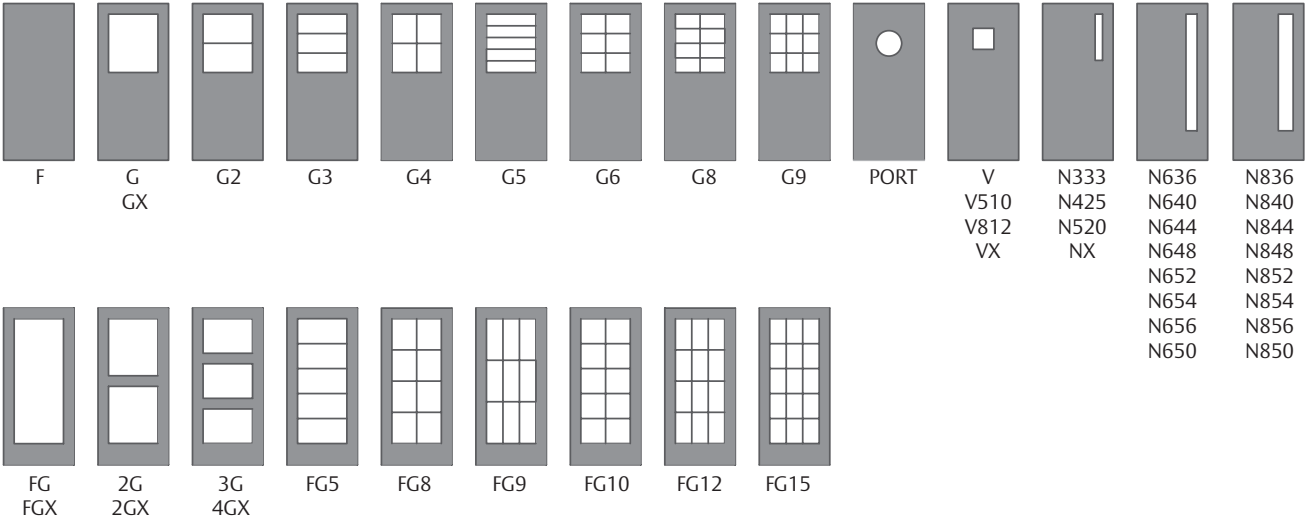


ASSA ABLOY

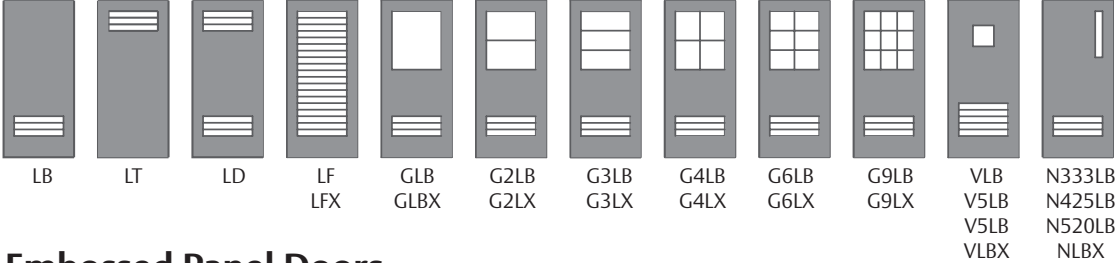
ASSA ABLOY, the global leader in door opening solutions

Door Designs

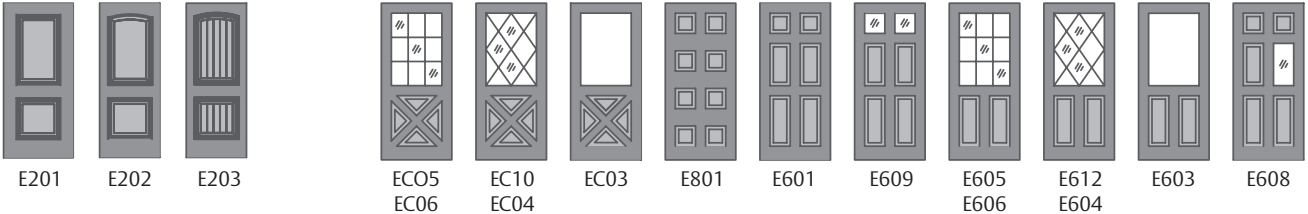
Flush Doors and Doors with Windows



Doors and Louvers



Embossed Panel Doors



Fire Door Labeling

LABEL	OPENING	RATING	GLASS	DOOR SERIES					
				REGENT™ OMEGA™	LEGION™ ULTRADOR™	IMPERIAL™ VERSADOOR™	MEDALLION™	MEDALLION™ 450°	FUEGO™ 250°
A	Walls separating buildings or walls dividing a building into fire zones	3 hr (180 min.)	100 SQ. Inches per Door Leaf. Min. 6" Stiles						
B	Enclosures of vertical communication, stairwells, elevator shafts or Egress through Buildings	1-1/2 hr (90 min.)	100 square inches per Lite Min. 6" Stiles						
C	Corridors and room partitions	3/4 hr (45 min.)	1296 square inches per lite with no dimension larger than 54" minimum 6" stile						
D	Exterior walls subject to severe fire exposure from outside	1-1/2 hr (90 min.)	None						
E	Exterior walls subject to light or moderate fire exposure from outside	3/4 hr (45 min.)	1296 square inches per lite Min. 6" Stiles						
F	Openings between living quarters and corridors where smoke is primary concern	1/3 hr (20 min.)	1296 square inches per lite Min. 6" Stiles						

Note: Always reference the most recent edition of ANSI NFPA 80 - Fire Doors and Fire Windows

Temperature-rise Rated Doors

Temperature-rise rated doors allow people to pass by the door safely when fire is on the other side. When an opening is required to retard the transmission of heat from one area to an adjacent area, a temperature-rise rated door is required. These doors are typically required in locations such as stairwell access doors, electrical control rooms, paint storage, etc. Temperature-rise designations indicate the maximum rise in temperature above ambient on the non-fire side of the door during the first 30 minutes of exposure in a standard fire test.

Ceco manufactures two types of temperature-rise rated fire doors.

- Medallion 450° is a temperature-rise rated door which allows the unexposed side of the door to reach a maximum of 450° during the first 30 minutes of testing
- Fuego is a 250° temperature-rise rated door which will allow the unexposed side of the door to reach a maximum of 250° during the first 30 minutes of testing



ASSA ABLOY, the global leader in door opening solutions

Fire Doors

With Vision Panel Trim

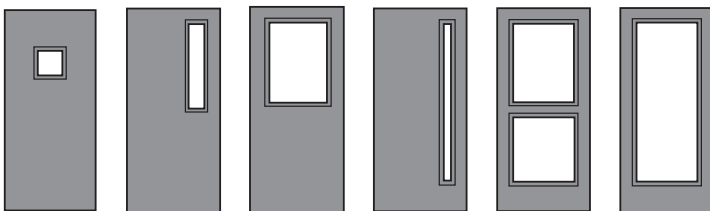
DOOR MODEL	AGENCY	HOURLY RATING (MAXIMUM)	TEMP RISE F DEGREES	MAX GLAZED AREA (SQ. IN.)	MAX GLAZED AREA (SQ. MM.)	DOOR MODEL	AGENCY	HOURLY RATING (MAXIMUM)	TEMP RISE F DEGREES	MAX GLAZED AREA (SQ. IN.)	MAX GLAZED AREA (SQ. MM.)
RI, OI, LP, UP, IU, VU, MS	UL/WH	3*	NTR	100/door	2540/door	FT	UL/WH	3*	250	100/door	2540/door
RI, OI, LP, UP, IU, VU, MS	UL/WH	2*	NTR	1296/lite	32918/door	FT	UL/WH	2*	250	100/door	2540/door
RI, OI, LP, UP, IU, VU, MS	UL/WH	1-1/2	NTR	1296/Lite	32918/Lite	FT	UL/WH	2*	NTR	1296/door	32918/lite
MS4	UL/WH	1-1/2	450	100/door	2540/door	FT	UL/WH	1-1/2	250	100/door	2540/door
RI, OI, LP, UP, IU, VU, MS	UL/WH	1-1/2	NTR	1296/lite	32918/lite	FT	UL/WH	1-1/2	NTR	1296/lite	32918/lite
MS	UL/WH	1	NTR	1296/Lite	32918/Lite	FT	UL/WH	1	250	100/door	2540/door
MS4	UL/WH	3/4	450	100/door	2540/lite	FT	UL/WH	1*	NTR	1296/door	32918/lite
MS	UL/WH	1*	NTR	100/door	2540/door	FT	UL/WH	3/4	250	100/door	2540/door
RI, OI, LP, UP, IU, VU	UL/WH	3/4	NTR	1296/lite	32918/lite	FT	UL/WH	3/4	NTR	1296/lite	32918/lite
MB4	UL/WH	3/4	450	100/door	2540/lite	FT	UL/WH	3/4*	NTR	2856/lite	72542/lite
RI, OI, LP, UP, IU, VU	UL/WH	3/4	NTR	2856/lite	72542/lite	FT	UL/WH	1/3	NTR	1296/lite	32918/lite
MS	WH	3/4	NTR	2880/lite	73152/lite	FT	UL/WH	1/3	NTR	2856/lite	72542/lite
RI, OI, LP, UP, IU, VU	UL/WH	1/3	NTR	1296/lite	32918/lite	FT	UL/WH	1/3* no hose	NTR	2971/lite	75463/lite
RI, OI, LP, UP, IU, VU, MS	UL/WH	1/3	NTR	2856/lite	72542/lite						
MS	UL	1/3 no hose	NTR	2880/lite	73152/lite	TX	UL/WH	3/4	NTR	2842/lite	72187/lite
MS	WH	1/3*	NTR	2880/lite	73152/lite	TX	UL/WH	1/3	NTR	2842/lite	72187/lite
RI, OI, LP, UP, IU, VU	UL/WH	1/3 no hose	NTR	2971/lite	75463/lite						

*Requires special glazing

CECO LABELED STEEL FRAMES: e.g., standard, custom, slip-on drywall, Dutch, double egress, communicating, multiple door opening, transom, sidelite, fire windows — are available for rated walls and all the above doors. Ask for details.

RI or OI = Regent or Omega,
LP or UP = Legion or UltraDor
IU or VU = Imperial or Versador
MS = Medallion
MS4 = Medallion 450°
TX = ThruLite
FT = Fuego

Designs



Glass and glazing are not included.



ASSA ABLOY, the global leader in door opening solutions

Fire Doors

With Single Point Latching

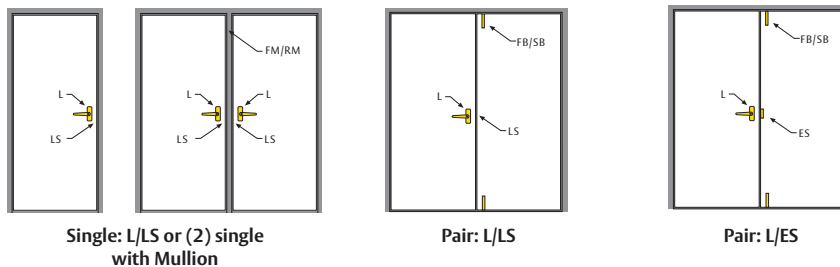
DOOR	AGENCY	HOURLY RATING (MAXIMUM)	FACE SHEET GAUGE	FACE SHEET MM	UL 10B				UL 10C				ASTRAGAL	MEMO
					MAX WIDTH (FT.IN.)	MAX WIDTH (MM)	MAX HEIGHT (FT. IN.)	MAX HEIGHT (MM)	MAX WIDTH (FT.IN.)	MAX WIDTH (MM)	MAX HEIGHT (FT. IN.)	MAX HEIGHT (MM)		
RI or OI	UL/WH	3	16, 18	1.3, 1.0	4-0	1219.2	9-0	2743.2	4-0	1219.2	9-0	2743.2	—	LS
RI or OI	UL	1-1/2	20	0.8	3-4	1016.0	7-2	2184.4	3-4	1016.0	7-2	2184.4	—	LS
RI or OI	WH	1-1/2	20	0.8	4-0	1219.2	8-0	2438.4	4-0	1219.2	8-0	2438.4	—	LS
FT	UL	3	16, 18	1.3, 1.0	4-0	1219.2	9-0	2743.2	4-0	1219.2	9-0	2743.2	—	LS
FT	UL/WH	3	20	0.8	4-0	1219.2	8-0	2438.4	4-0	1219.2	8-0	2438.4	—	LS
FT	WH	3	16, 18	1.3, 1.0	4-0	1219.2	9-0	2743.2	4-0	1219.2	9-0	2743.2	—	LS
MS	UL	3*	14	1.7	4-0	1219.2	9-0	2743.2	4-0	1219.2	9-0	2743.2	—	LS
MS	UL	3*	16, 18	1.3, 1.0	4-0	1219.2	10-0	3048.0	4-0	1219.2	10.0	3048.0	—	LS
MS	WH	3*	14, 16, 18	1.7, 1.3, 1.0	4-0	1219.2	9-0	2743.2	4-0	1219.2	8-0	2438.4	—	LS
TX	UL/WH	3/4	16	1.3, 1.0	4-0	1219.2	8.0	2438.4	4-0	1219.2	8-0	2438.4	—	LS
IU or VU	UL/WH	3	14, 16, 18	1.7, 1.3, 1.0	4-0	1219.2	7.0	2438.4	4-0	1219.2	7-0	2133.6	—	LS
IU or VU	UL/WH	1-1/2	20	0.8	4-0	1219.2	7.0	2438.4	4-0	1219.2	7-0	2133.6	—	LS
RI or OI	UL/WH	1-1/2	16, 18	1.3, 1.0	8-0	2438.4	9-0	2743.2	8-0	2438.4	9-0	2743.2	Optional	LS
RI or OI	UL/WH	3	16, 18	1.3, 1.0	8-0	2438.4	8-0	2438.4	8-0	2438.4	8-0	2438.4	Required	LS
RI or OI	UL/WH	1-1/2	20	0.8	6-0	1828.8	7-0	2133.6	6-0	1828.8	7-0	2133.6	Required	LS
RI or OI	UL/WH	1-1/2	20	0.8	8-0	2438.4	8-0	2438.4	8-0	2438.4	8-0	2438.4	Required	LS
FT	UL	1-1/2	16, 18	1.3, 1.0	8-0	2438.4	9-0	2743.2	8-0	2438.4	9-0	2743.2	Optional	LS
FT	WH	3	20	0.8	7-4	2235.2	7-2	2184.4	7-4	2235.2	7-2	2184.4	Required	LS
FT	UL	3	16, 18	1.3, 1.0	7-4	2235.2	9-0	2743.2	7-4	2235.2	9-0	2743.2	Required	LS
FT	UL/WH	1-1/2	16, 18	1.3, 1.0	8-0	2438.4	9-0	2743.2	8-0	2438.4	9-0	2743.2	Required	LS
FT	WH	1-1/2	20	0.8	8-0	2438.4	8-0	2438.4	8-0	2438.4	8-0	2438.4	Required	LS
FT	WH	3	16, 18	1.3, 1.0	7-4	2235.2	9-0	2743.2	7-4	2235.2	8-0	2438.4	Required	LS
MS	UL	1-1/2	16, 18	1.3, 1.0	8-0	2438.4	9-0	2743.2	8-0	2438.4	9-0	2743.2	Optional	LS
MS	UL	3*	16, 18	1.3, 1.0	8-0	2438.4	10-0	3048.0	8-0	2438.4	10-0	3048.0	Required	LS
MS	UL/WH	3*	14	1.7	8-0	2438.4	9-0	2743.2	8-0	2438.4	9-0	2743.2	Required	LS
MS	WH	3*	16, 18	1.3, 1.0	8-0	2438.4	9-0	2743.2	8-0	2438.4	9-0	2743.2	Optional**	LS
TX	UL/WH	3/4	16	1.3	8-0	2438.4	8-0	2438.4	8-0	2438.4	8-0	2438.4	Optional	LS
IU or VU	UL/WH	1-1/2	16, 18, 20	1.3, 1.0, .08	8-0	2438.4	7.0	2438.4	8-0	2438.4	8-0	2438.4	Optional	LS
IU or VU	UL/WH	3	16, 18	1.3, 1.0	8-0	2438.4	7.0	2438.4	8-0	2438.4	8-0	2438.4	Required	LS
RI or OI	UL/WH	1-1/2	16, 18	1.3, 1.0	8-0	2438.4	9-0	2743.2	8-0	2438.4	9-0	2743.2	Optional	ES
RI or OI	UL/WH	3	16, 18	1.3, 1.0	6-0	1828.8	7-2	2184.4	6-0	1828.8	7-2	2184.4	Required	ES
MS	UL/WH	1-1/2	16, 18	1.3, 1.0	8-0	2438.4	9-0	2743.0	8-0	2438.4	9-0	2743.2	Optional	ES
MS	UL	3*	16, 18	1.3, 1.0	6-0	1828.8	7-2	2164.4	6-0	1828.8	7-2	2184.4	Required	ES
MS	UL	3*	16, 18	1.3, 1.0	6-0	1828.8	7-2	2784.2	6-0	1828.8	7-2	2184.4	Optional**	ES

L = Latch, LS = Latch Strike, ES = Electric Strike, FS/SB = Flush or Surface Bolts, F/M = Fixed or Removable Mullion, OPT = Optional, REQ'D = Required, STD SWG = Standard Swing

* Medallion 450° temperature rise door maximum rating is 1-1/2 hours

** Local codes may require astragal for 3 hour pairs.

RI or OI = Regent or Omega, LP or UP = Legion or UltraDor, IU or VU = Imperial or Versadoor, MS = Medallion, MS4 = Medallion 450°, TX = ThruLite, FT = Fuego



ASSA ABLOY, the global leader in door opening solutions

Fire Doors

With Fire Exit Hardware

DOOR	AGENCY	HOURLY RATING (MAXIMUM)	FACE SHEET GAUGE	FACE SHEET MM	UL 10B				UL 10C				ASTRAGAL	MEMO
					MAX WIDTH (FT.IN.)	MAX WIDTH (MM)	MAX HEIGHT (FT.IN.)	MAX HEIGHT (MM)	MAX WIDTH (FT.IN.)	MAX WIDTH (MM)	MAX HEIGHT (FT.IN.)	MAX HEIGHT (MM)		
RI or OI, LP or UP	UL/WH	3	16, 18	1.3, 1.0	4-0	1219.2	9-0	2743.2	4-0	1219.2	9-0	2743.2	—	LS
RI or OI, LP or UP	UL	1-1/2	20	0.8	3-4	1016.0	7-2	2184.4	3-4	1016.0	7-2	2184.4	—	LS
RI or OI, LP or UP	WH	1-1/2	20	0.8	4-0	1219.2	8-0	2438.4	4-0	1219.2	8-0	2438.4	—	LS
FT	UL	3	16, 18	1.3, 1.0	4-0	1219.2	9-0	2743.2	4-0	1219.2	9-0	2743.2	—	LS
FT	UL/WH	3	20	0.8	4-0	1219.2	8-0	2438.4	4-0	1219.2	8-0	2438.4	—	LS
FT	WH	3	16, 18	1.3, 1.0	4-0	1219.2	9-0	2743.2	4-0	1219.2	8-0	2438.4	—	LS
MS	UL	3*	14	1.7	4-0	1219.2	9-0	2743.2	4-0	1219.2	9-0	2743.2	—	LS
MS	UL	3*	16, 18	1.3, 1.0	4-0	1219.2	10-0	3048.0	4-0	1219.2	10-0	3048.0	—	LS
MS	WH	3*	14, 16, 18	1.7, 1.3	4-0	1219.2	9-0	2743.2	4-0	1219.2	9-0	2743.2	—	LS
TX	UL/WH	3/4	16	1.3, 1.0	4-0	1219.2	8-0	2438.4	4-0	1219.2	8-0	2438.4	—	LS
IU or VU	UL/WH	3	14, 16, 18	1.7, 1.3	4-0	1219.2	7-0	2438.4	4-0	1219.2	7-0	2133.6	—	LS
IU or VU	UL/WH	1-1/2	20	0.8	4-0	1219.2	7-0	2438.4	4-0	1219.2	7-0	2133.6	—	LS
RI or OI, LP or UP	UL/WH	1-1/2	16, 18	1.3, 1.0	8-0	2438.4	9-0	2743.2	8-0	2438.4	9-0	2743.2	Optional	LS or ES
RI or OI, LP or UP	UL/WH	3	16, 18	1.3, 1.0	6-0	1828.8	7-2	2184.2	8-0	1828.8	7-2	2184.2	Required	ES
RI or OI, LP or UP	UL/WH	3	16, 18	1.3, 1.0	8-0	2438.4	8-0	2438.4	6-0	2438.4	8-0	2438.4	Required	LS
RI or OI, LP or UP	UL/WH	1-1/2	16, 18	1.3, 1.0	8-0	2438.4	9-0	2743.2	8-0	2438.4	9-0	2743.2	Optional	OBS
RI or OI, LP or UP	UL	1-1/2	20	0.8	8-0	2438.4	8-0	2438.4	8-0	2438.4	8-0	2438.4	Optional	LS
FT	WH	1-1/2	16, 18	1.3, 1.0	8-0	2438.4	9-0	2743.2	8-0	2438.4	9-0	2438.4	Required	LS
FT	UL	1-1/2	20	0.8	8-0	2438.4	8-0	2438.4	8-0	2438.4	8-0	2438.4	Required	LS
FT	UL/WH	3	16, 18	1.3, 1.0	7-4	2235.2	9-0	2743.2	7-4	2235.2	9-0	2743.2	Required	LS
FT	WH	3	20	0.8	7-4	2235.2	7-2	2184.2	7-4	2235.2	7-0	2184.2	Required	LS
FT	WH	1-1/2	16, 18	1.3, 1.0	8-0	2438.4	9-0	2743.2	8-0	2235.2	8-0	2438.4	Required	LS
FT	UL	3	16, 18	1.3, 1.0	7-4	2235.2	9-0	2743.2	7-4	2438.4	9-0	2743.2	Optional	LS
MS	UL	1-1/2	16, 18	1.3, 1.0	8-0	2438.4	9-0	2743.2	8-0	2235.2	9-0	2743.2	Optional	LS
MS	UL/WH	3	16, 18	1.3, 1.0	8-0	2438.4	10-0	3048.0	8-0	2438.4	10-0	3048.4	Required	LS
MS	WH	3	14	1.7	8-0	2438.4	9-0	2743.2	8-0	2438.4	9-0	2743.2	Required	LS
MS	WH	1-1/2	16, 18	1.3, 1.0	8-0	2438.4	9-0	2743.2	8-0	2438.4	9-0	2743.2	Optional	ES
MS	WH	3	16, 18	1.3, 1.0	6-0	1828.4	7-0	2184.2	6-0	1828.8	7-2	2184.2	Required	ES
MS	WH	1-1/2	16, 18	1.3, 1.0	8-0	2438.4	8-0	2438.4	8-0	2438.4	8-0	2438.4	Optional	OBS
MS	WH	1-1/2	16, 18	1.3, 1.0	8-0	2438.4	9-0	2743.2	8-0	2438.4	9-0	2743.2	Optional	LS or ES
MS	WH	3*	16, 18	1.3, 1.0	8-0	2438.4	9-0	2743.2	8-0	2438.4	9-0	2743.2	Optional	LS
MS	WH	3*	16, 18	1.3, 1.0	6-0	1828.8	7-2	2184.2	6-0	1828.8	7-2	2184.2	Optional	ES
MS	UL/WH	1-1/2	14	1.7	8-0	2438.4	8-0	2438.4	8-0	2438.4	8-0	2438.4	Required	OBS

RI or OI = Regent or Omega, LP or UP = Legion or UltraDor, IU or VU = Imperial or Versadoor, MS = Medallion, MS4 = Medallion 450°, TX = ThruLite, FT = Fuego

* Medallion 450° temperature rise door maximum rating is 1-1/2 hours



ASSA ABLOY

ASSA ABLOY, the global leader in door opening solutions

Fire Doors

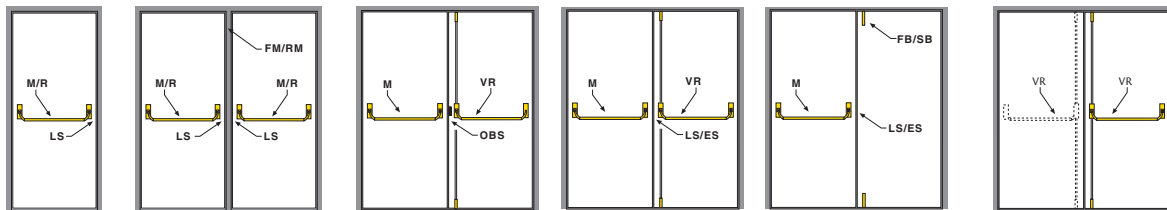
With Fire Exit Hardware

DOOR	AGENCY	HOURLY RATING (MAXIMUM)	FACE SHEET GAUGE	FACE SHEET MM	UL 10B				UL 10C				ASTRAGAL	MEMO
					MAX WIDTH (FT.IN.)	MAX WIDTH (MM)	MAX HEIGHT (FT.IN.)	MAX HEIGHT (MM)	MAX WIDTH (FT.IN.)	MAX WIDTH (MM)	MAX HEIGHT (FT.IN.)	MAX HEIGHT (MM)		
TX	UL/WH	3/4	16	1.3	8-0	2438.4	8-0	2438.4	8-0	2438.4	8-0	2438.4	Optional	LS or ES
TX	UL/WH	3/4	16	1.3	8-0	2438.4	8-0	2438.4	8-0	2438.4	8-0	2438.4	Optional	OBS
IU or VU	UL/WH	1-1/2	20	20	8-0	2438.4	7-0	2438.4	8-0	2438.4	7-0	2133.6	Optional	LS
IU or VU	UL/WH	3	16, 18	1.3, 1.0	8-0	2438.4	7-0	2438.4	8-0	2438.4	7-0	2133.6	Required	LS
IU or VU	UL/WH	1-1/2	16, 18	1.3, 1.0	8-0	2438.4	7-0	2743.2	8-0	2438.4	7-0	2133.6	Optional	VR
IU or VU	UL/WH	1-1/2	16, 18	1.3, 1.0	8-0	2438.4	7-0	2438.4	8-0	2438.4	7-0	2133.6	Optional	FB/SR
RI or OI, LP or UP	UL/WH	1-1/2	16, 18	1.3, 1.0	8-0	2438.4	9-0	2743.2	8-0	2438.4	9-0	2743.2	N/A	STD SWG
RI or OI, LP or UP	UL/WH	1-1/2	16, 18	1.3, 1.0	8-0	2438.4	9-0	2743.2	8-0	2438.4	9-0	2743.2	Optional	DE
RI or OI, LP or UP	UL/WH	3*	16, 18	1.3, 1.0	8-0	2438.4	7-2	2184.2	8-0	2438.4	7-0	2184.2	Required	DE
RI or OI, LP or UP	UL/WH	1-1/2	20	0.8	8-0	2438.4	8-0	2438.4	8-0	2438.4	8-0	2438.4	N/A	STD SWG
FT	UL	1-1/2	16, 18	1.3, 1.0	8-0	2438.4	9-0	2743.2	8-0	2438.4	9-0	2743.2	N/A	STD SWG
FT	UL/WH	1-1/2	20	0.8	8-0	2438.4	8-0	2438.4	8-0	2438.4	8-0	2743.2	N/A	STD SWG
FT	WH	1-1/2	16, 18	1.3, 1.0	8-0	2438.4	9-0	2743.2	8-0	2438.4	8-0	2438.4	N/A	STD SWG
FT	UL/WH	3	16, 18	1.3, 1.0	6-0	2438.4	8-0	2438.4	8-0	2438.4	8-0	2438.4	Required	DE
MS	UL	1-1/2	16, 18	1.3, 1.0	8-0	2438.4	9-0	2743.2	8-0	2438.4	9-0	2743.2	N/A	STD SWG
MS	UL	1-1/2	16, 18	1.3, 1.0	8-0	2438.4	9-0	2743.2	8-0	2438.4	9-0	2743.2	Optional	DE
MS	UL	3*	16, 18	1.3, 1.0	8-0	2438.4	10-0	3048.0	8-0	2438.4	10-0	3048.0	Required	DE
MS	WH	3*	16, 18	1.3, 1.0	8-0	2438.4	9-0	2743.2	8-0	2438.4	9-0	2743.2	N/A	STD SWG
MS	WH	3*	16, 18	1.3, 1.0	8-0	2438.4	9-0	2743.2	8-0	2438.4	9-0	2743.2	Optional	DE
TX	UL/WH	3/4	16	1.3	8-0	2438.4	8-0	2438.4	8-0	2438.4	8-0	2438.4	Optional	DE
TX	UL/WH	3/4	16	1.3	8-0	2438.4	8-0	2438.4	8-0	2438.4	8-0	2438.4	N/A	STD SWG
IU or VU	UL/WH	1-1/2	16, 18	1.3, 1.0	8-0	2438.4	7-0	2743.2	8-0	2438.4	7-0	2133.6	Optional	DE
IU or VU	UL/WH	3	16, 18	1.3, 1.0	8-0	2438.4	7-0	2184.2	8-0	2438.4	7-0	2133.6	Required	DE
IU or VU	UL/WH	1-1/2	16, 18	1.3, 1.0	8-0	2438.4	7-0	2743.2	8-0	2438.4	7-0	2133.6	N/A	STD SWG
IU or VU	WH	1-1/2	20	0.8	8-0	2438.4	7-0	2438.4	8-0	2438.4	7-0	2133.6	N/A	STD SWG

LS = Latch Strike, FB/SB = Flush or Surface Bolts, FM/RM = Fixed or Removable Mullion, M = Mortise FEH, VR = Vertical Rod FEH, OBS = Open Back Strike (M/VR), M/R = Mortise or Rim FEH, DE = Double Egress, STD SWG = Standard Swing, NA = Not Allowed.

RI or OI = Regent or Omega, LP or UP = Legion or UltraDor, IU or VU = Imperial or Versadoor, MS = Medallion, MS4 = Medallion 450°, TX = ThruLite, FT = Fuego

Latch Types



Single: Mortise/Rim or
(2) Singles with Mullion

3 Point Latching

4 Point Latching

Two point latching (top rod only) is also available — 1-1/2 hour rating maximum.



ASSA ABLOY, the global leader
in door opening solutions



ASSA ABLOY

9159 Telecom Drive
Milan, TN 38358

(731) 686-8345
www.cecodoor.com

Steel Door and Frame Questions?

Contact our Architectural Help Desk
1-888-CECODOOR
(1-888-232-6366)
email: archhelp@cecodoor.com

To locate a Ceco Distributor worldwide,
visit PartnerNet at www.cecodoor.com



ReadySet®

As part of their promise to provide innovative, fast, and effective security solutions to their customers, ASSA ABLOY Group companies offer ReadySet® preassembled doorways that can be installed in under 10 minutes.

ReadySet® is a registered trademark of ASSA ABLOY Door Group LLC, an ASSA ABLOY Group company.

Hardwiring Made Easy®



ElectroLynx®

As part of their promise to provide innovative, fast and effective high security solutions to their customers, ASSA ABLOY Group companies offer ElectroLynx®, a universal quick-connect system that simplifies the electrification of the door opening.

ElectroLynx® is a registered trademark of ASSA ABLOY Inc.

Arched-Tech™, ArmorShield™, Colorstyle™, Fuego™, Imperial™, Imperial Maxim™, Madera™, Marine-Tech™, Medallion™, Medallion Maxim™, Omega™, Regent™, RestrictDor™, Sight Light™, Smoke-Tech™, Sound-Tech™, Stainless-Tech™, StormPro™, ThruLite™ and Versadoor™ are trademarks of ASSA ABLOY Door Group LLC.

Copyright © 2004, 2008, ASSA ABLOY Door Group, LLC, an ASSA ABLOY Group company. All rights reserved. Reproduction in whole or in part without the express written permission of ASSA ABLOY Door Group, LLC is prohibited.

ASSA ABLOY is the global leader in door opening solutions, dedicated to satisfying end-user needs for security, safety and convenience.

L-50D50M02-6/08